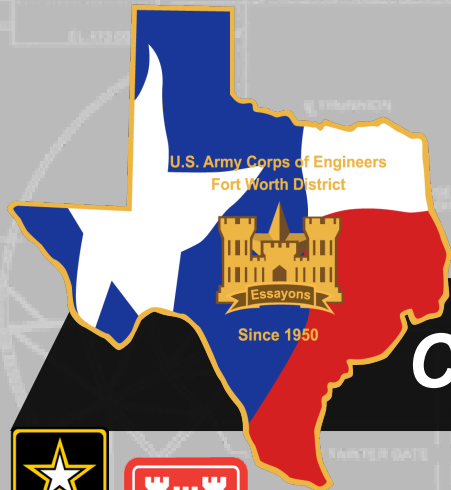


SAME 22ND ANNUAL INFRASTRUCTURE FORUM

“INFRASTRUCTURE: DELIVERING OUR FRAMEWORK FOR THE FUTURE”

Colonel Jonathan Stover, P.E.
Commander, Fort Worth District
December 2, 2022



CORNERSTONE OF THE SOUTHWEST



U.S. ARMY





FORT WORTH DISTRICT



MILITARY CONSTRUCTION

2 STATES



15



INSTALLATIONS

766 PROJECTS



\$3.1B IN DESIGN
\$3.5B IN CONSTRUCTION

CIVIL WORKS

51 PROJECTS



33% OF STORED TEXAS SURFACE H₂O



OF LEVEES AND BANK PROTECTION

9.6M ACRES OF LAND AND WATER

\$154B IN DAMAGES PREVENTED

INTERNATIONAL AND INTERAGENCY SUPPORT



PROVIDING TECHNICAL ASSISTANCE TO FEDERAL AGENCIES, STATE AND LOCAL GOVERNMENTS, TRIBAL NATIONS AND PRIVATE U.S. FIRMS

- BUREAU OF ENGRAVING AND PRINTING
- DEPT. OF VETERAN AFFAIRS
- NATIONAL CEMETERY ADMINISTRATION
- DEFENSE LOGISTICS AGENCY
- TRANSPORTATION SECURITY ADMINISTRATION
- U.S. CUSTOMS AND BORDER PROTECTION

HYDROPOWER

3 USACE OPERATED PLANTS



2 NON-FEDERAL PLANTS



108 MEGAWATT GENERATING CAPACITY

EMERGENCY MANAGEMENT

409 HURRICANE/ WILDFIRE VOLUNTEERS SINCE '16



59 EMERGENCY EVENTS SINCE '10

IRAQ/ AFGHANISTAN DEPLOYMENTS SINCE '01

223

REGULATORY

1000 PERMIT AUTHORIZATIONS PER F Y



310 COMPLIANCE AND ENFORCEMENT ACTIONS

12 OUTREACH EFFORTS



RECREATION

19M ANNUAL VISITORS

7700 CAMPSITES



\$7.9M
\$3.5B



FEE REVENUE
*Day use fees waived in Summer 20

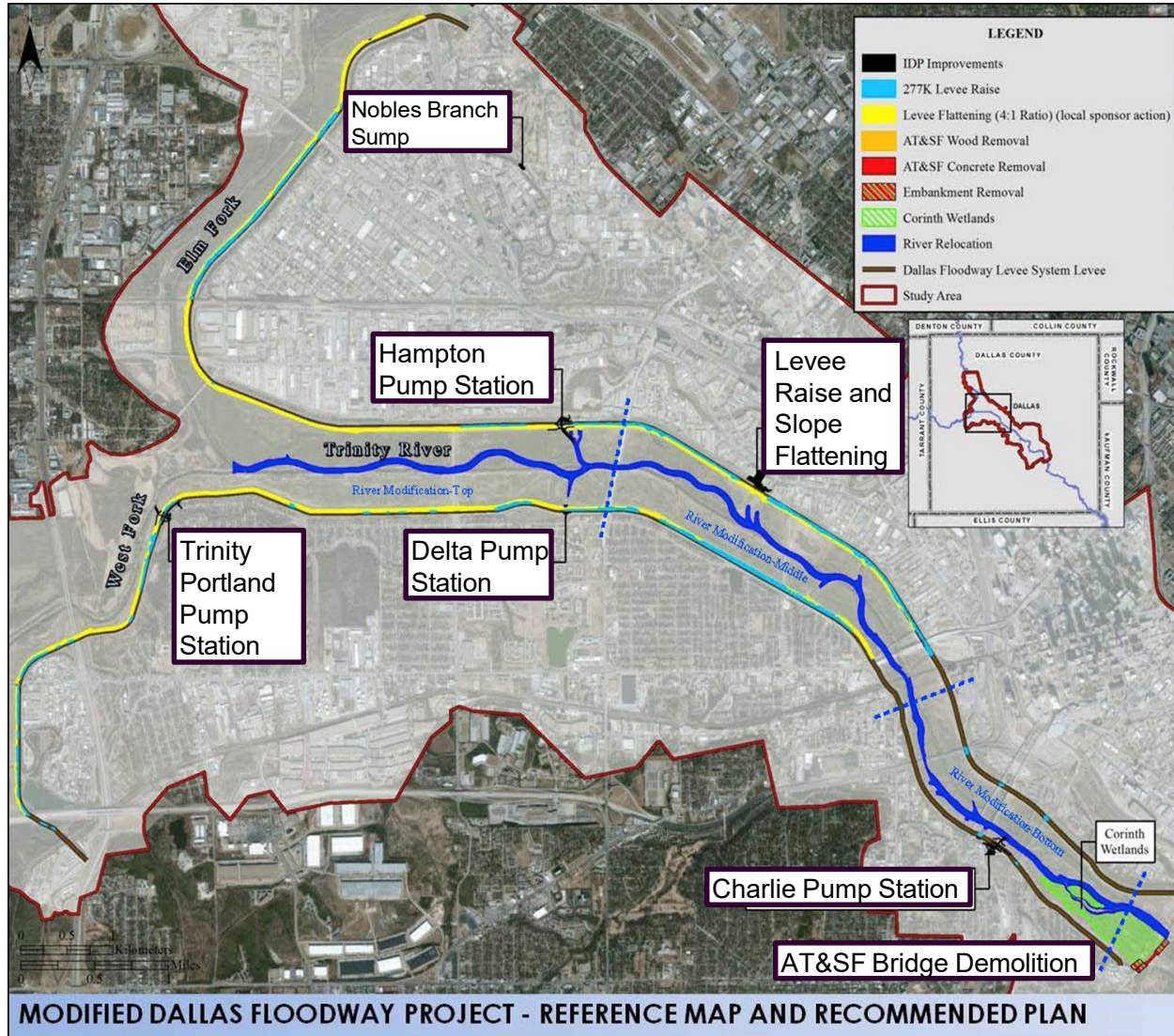
STATE AND LOCAL REVENUE



DALLAS FLOODWAY



AUTHORIZATION WRDA 2007, PL 110-114, SECTION 5141



MODIFIED DALLAS FLOODWAY PROJECT - REFERENCE MAP AND RECOMMENDED PLAN

277K CFS LEVEE RAISE AND SIDE SLOPE FLATTENING

- Awarded for \$55,990,600
- Raise the East & West Levees as well as flatten riverside slopes 4:1

TRINITY PORTLAND PUMP STATION

- Awarded for \$59,165,000
- Build new pump station
- 2 – 125,000 gpm concrete volute pumps
- 1 – 6,000 gpm low flow sump pump

DELTA PUMP STATION

- Building replacement
- 2 replacement pumps—700HP
- Upgraded electrical, HVAC, trash rack, and access road

CHARLIE PUMP STATIONS

- Awarded for \$63,559,380
- Build new pump station and demolish the existing pump station
- 3 – 75,000 gpm concrete volute pumps
- 1 – 6,000 gpm low flow sump pump

HAMPTON PUMP STATIONS

- Build new pump station, renovate existing station to include electrical upgrades and demolish the old pump station
- New station: 5 – 140,000 gpm concrete volute pumps

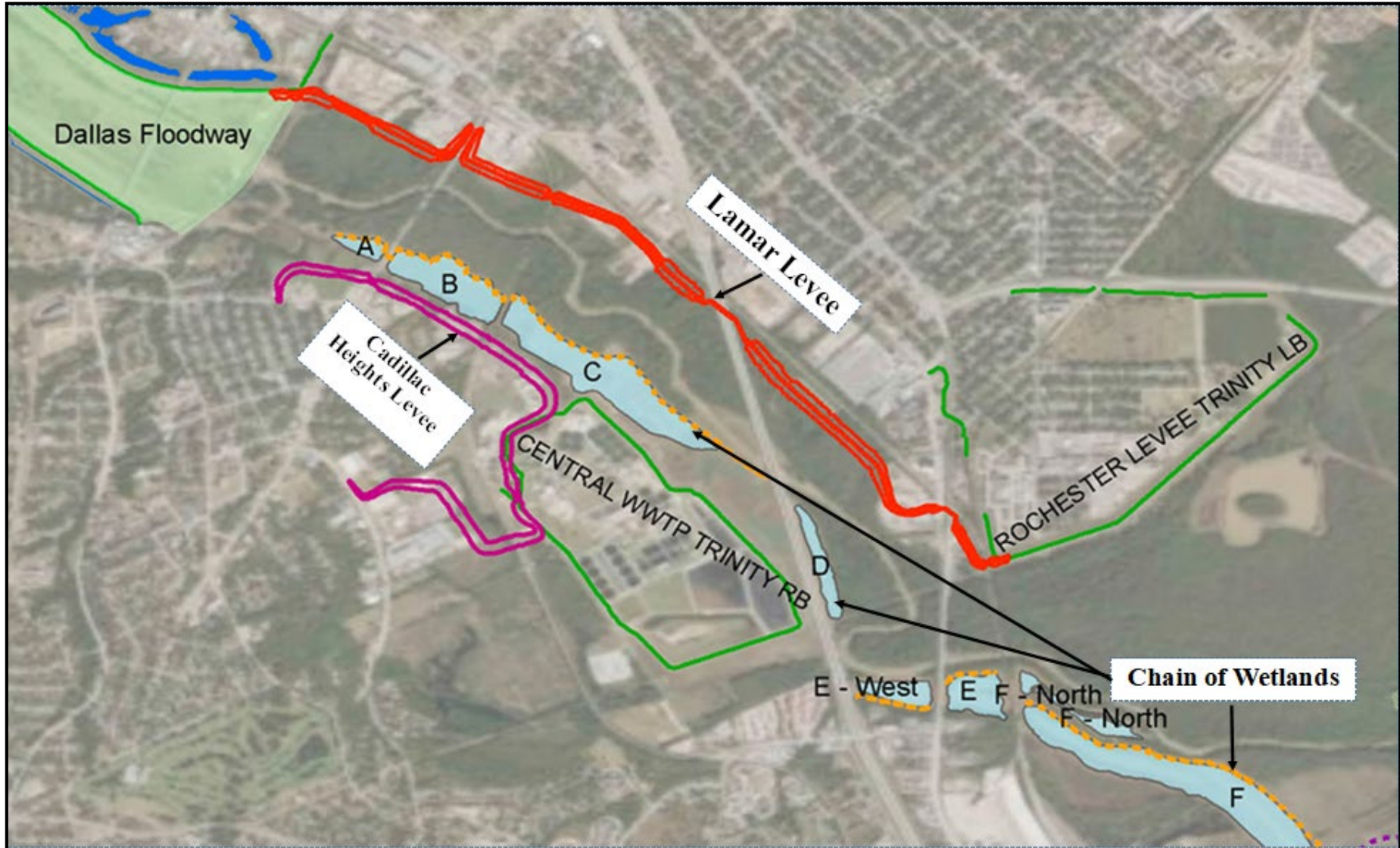
NOBLES BRANCH SUMP

- Add 4 – 60 inch pipe culverts with sluice gates
- Extend existing 60 inch gated culvert under Empire Central Drive
- Replace existing sluice gate and headwall
- Realign existing 48 inch Reinforced Concrete Pipe to parallel the new 60 inch culverts

AT&SF BRIDGE DEMOLITION

- Completed - \$1.7M
- Demo the existing trestle and concrete bridges

DALLAS FLOODWAY EXTENSION



LEWISVILLE DAM SAFETY MODIFICATIONS



MODIFIED CENTRAL CITY – FORT WORTH





U.S. ARMY CORPS OF ENGINEERS FORT WORTH DISTRICT



Fort Worth District Contacts:

COL Jonathan S. Stover, P.E., PMP
Commander, U.S. Army Corps of Engineers
Fort Worth District
jonathan.s.stover@usace.army.mil

Ms. Kathy Spillane
Chief, Civil Branch
kathleen.m.spillane@usace.army.mil

Eric W. Verwers
Deputy District Engineer for
Programs and Project
Management
eric.w.verwers@usace.army.mil



<https://www.facebook.com/usacefortworth/>



https://twitter.com/USACE_FortWorth