

THE TEXAS HIGH SPEED TRAIN

**CONNECTING PEOPLE, CREATING
JOBS & A NEW AMERICAN INDUSTRY**

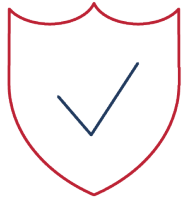




WHAT MAKES THE TEXAS TRAIN DIFFERENT

A New Way to Connect

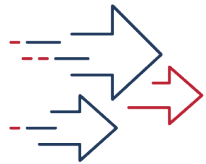
Reimagining Travel between North Texas and Houston



SAFE

Zero Accidents / Zero Fatalities

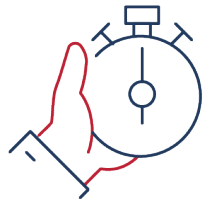
More than 53-years in operations in Japan



FAST

Travels at Nearly 200-Miles Per Hour

Houston to North Texas in 90-minutes



RELIABLE

Leaves On Time, Every Time

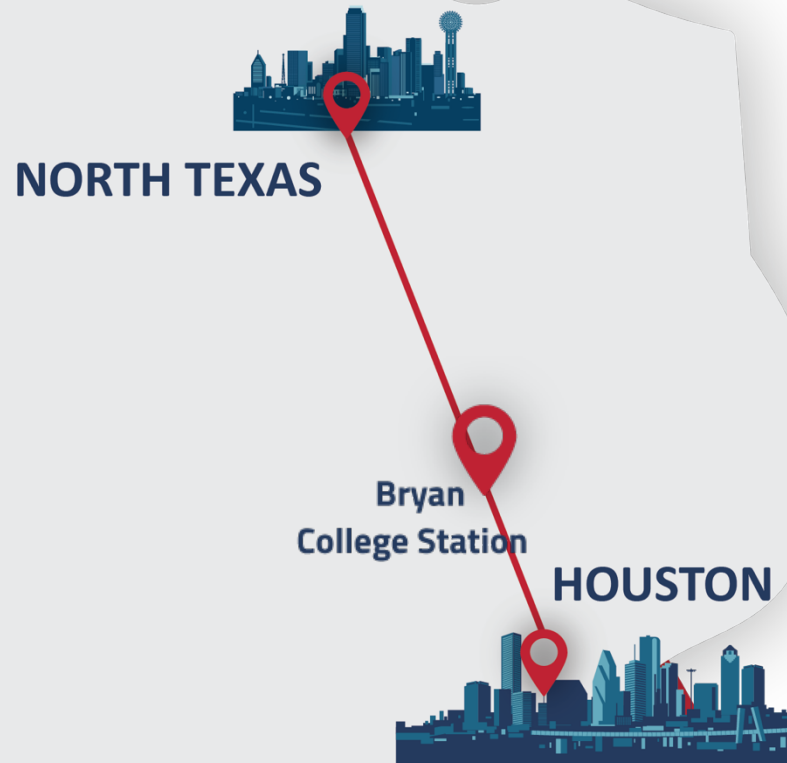
Less than a one-minute delay annually

Safest Mode of Transportation in the World



Investor-Owned Approach

Data-Driven Decisions



\$10s of millions spent on studies



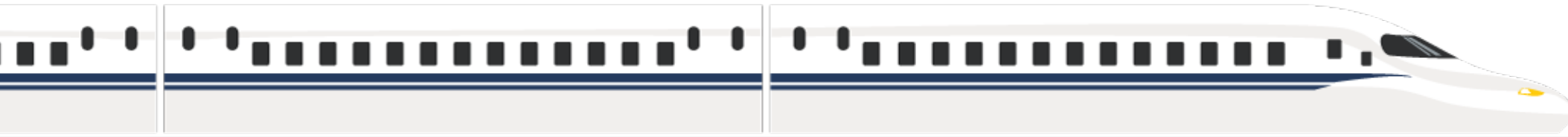
16-million trips per year already being made



80% of Texans surveyed said they would consider riding the train

Tracking Progress

The Train is Moving Forward



FEB 2011

Initial Technical
Feasibility Study
Validates
Concept

JUN 2014

Environmental
Review Process
Begins

JUL 2015

Texas-based
investors fund
\$75 million
capital raise

DEC 2017

DEIS is Released
By FRA

MAY 2018

Bechtel Named
Project Manager

OCT 2018

Salini Impregilo named
Civil Construction
Consortium lead,
operating with
The Lane Construction
Corporation

OCT 2018

Renfe, in
partnership with
Adif, announced
as Operating
Partner



BUILDING THE
TRAIN EVERY DAY



World Class Companies Working on the Train



GLOBAL BEST FOR AMERICA'S 1ST HIGH-SPEED TRAIN

Creating A New American Industry With World Class Companies



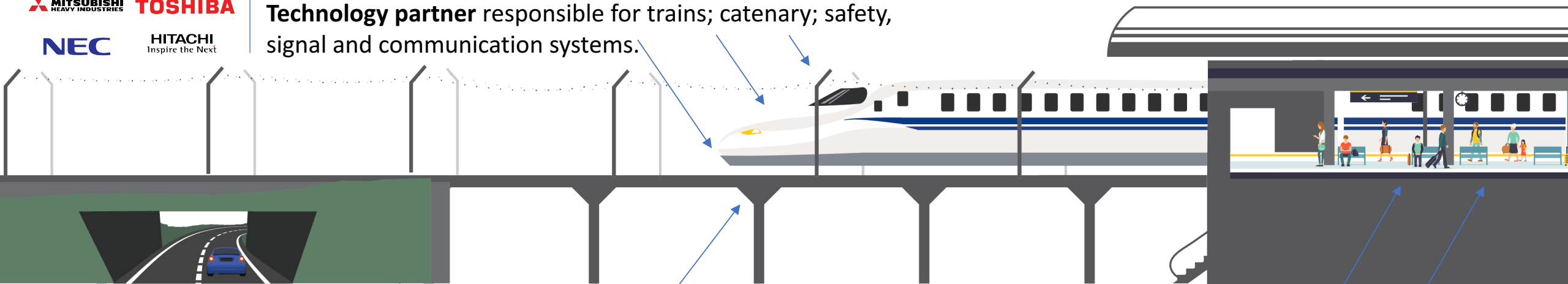
TEXAS
CENTRAL



Program manager will deliver the train on budget and schedule.



Technology partner responsible for trains; catenary; safety, signal and communication systems.



Civil contractor building everything from the ground up to the train rail including viaduct and berm foundations.



Operating Partner will run the trains, maintain systems such as power, signals and other equipment; oversee staff and service at train stations.



Construction on a Texas-Sized Scale

>\$12 Billion Investment in Civil Infrastructure



CONCRETE

10 million cubic yards of concrete, nearly 3X used in the Hoover Dam



RAIL

Nearly 1,100 miles of rail



STATIONS & FACILITIES

3 passenger stations
2 train maintenance facilities
multiple maintenance of way and power substations

Jobs, Jobs, Jobs

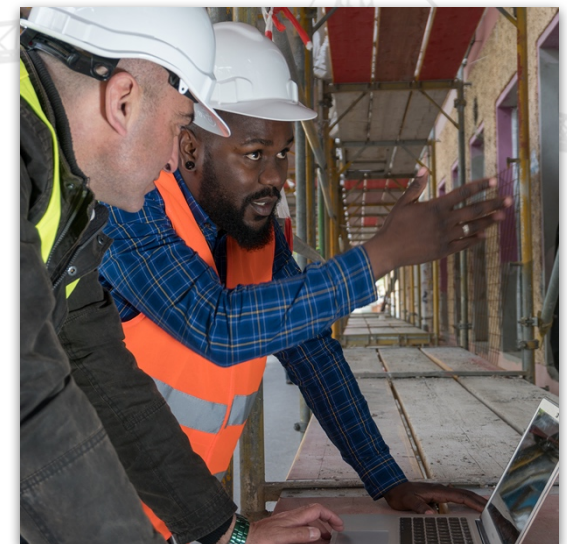
10,000 Direct Jobs per year During Construction



Electrician
\$42,000/year



Welder
\$50,000/year

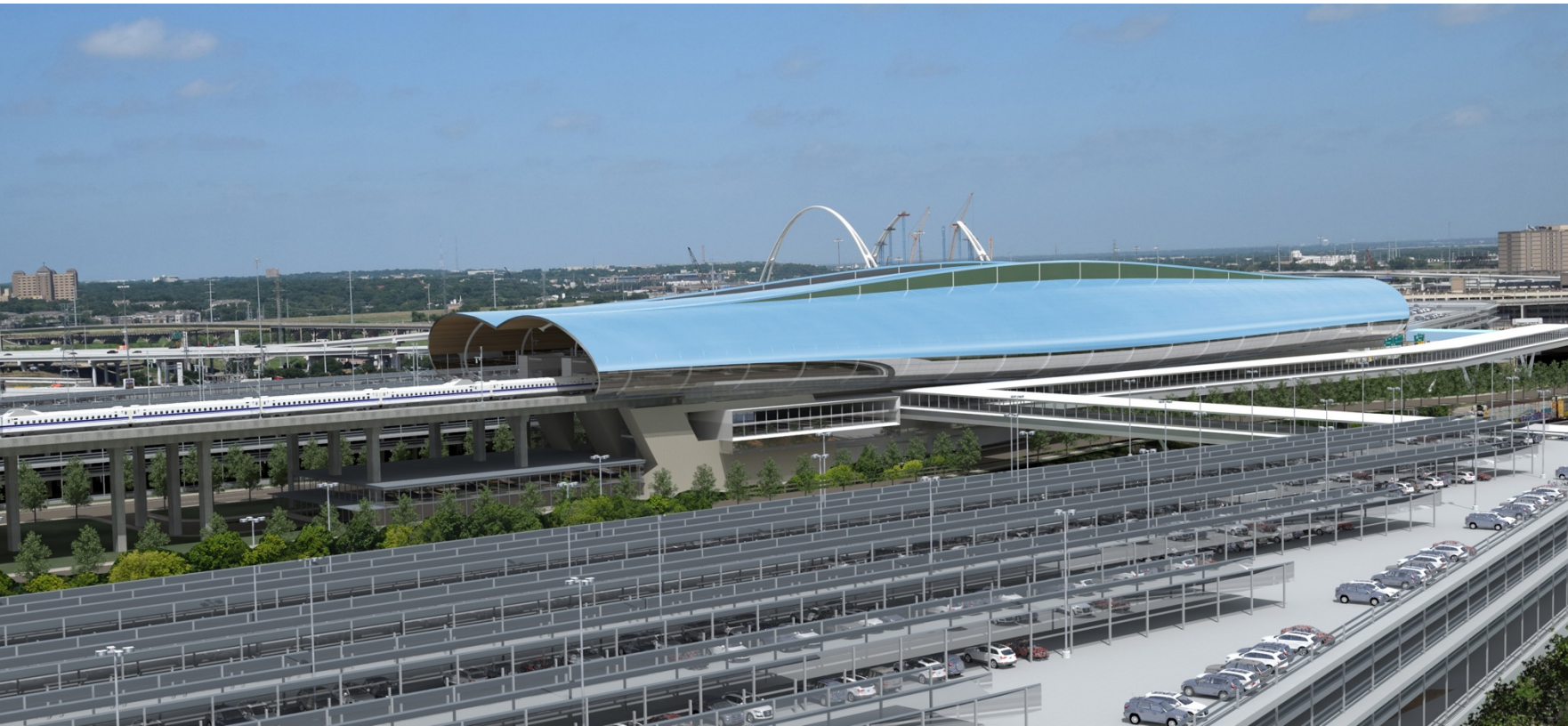


Construction Manager
\$80,000/year

Creating a New Industry in Texas

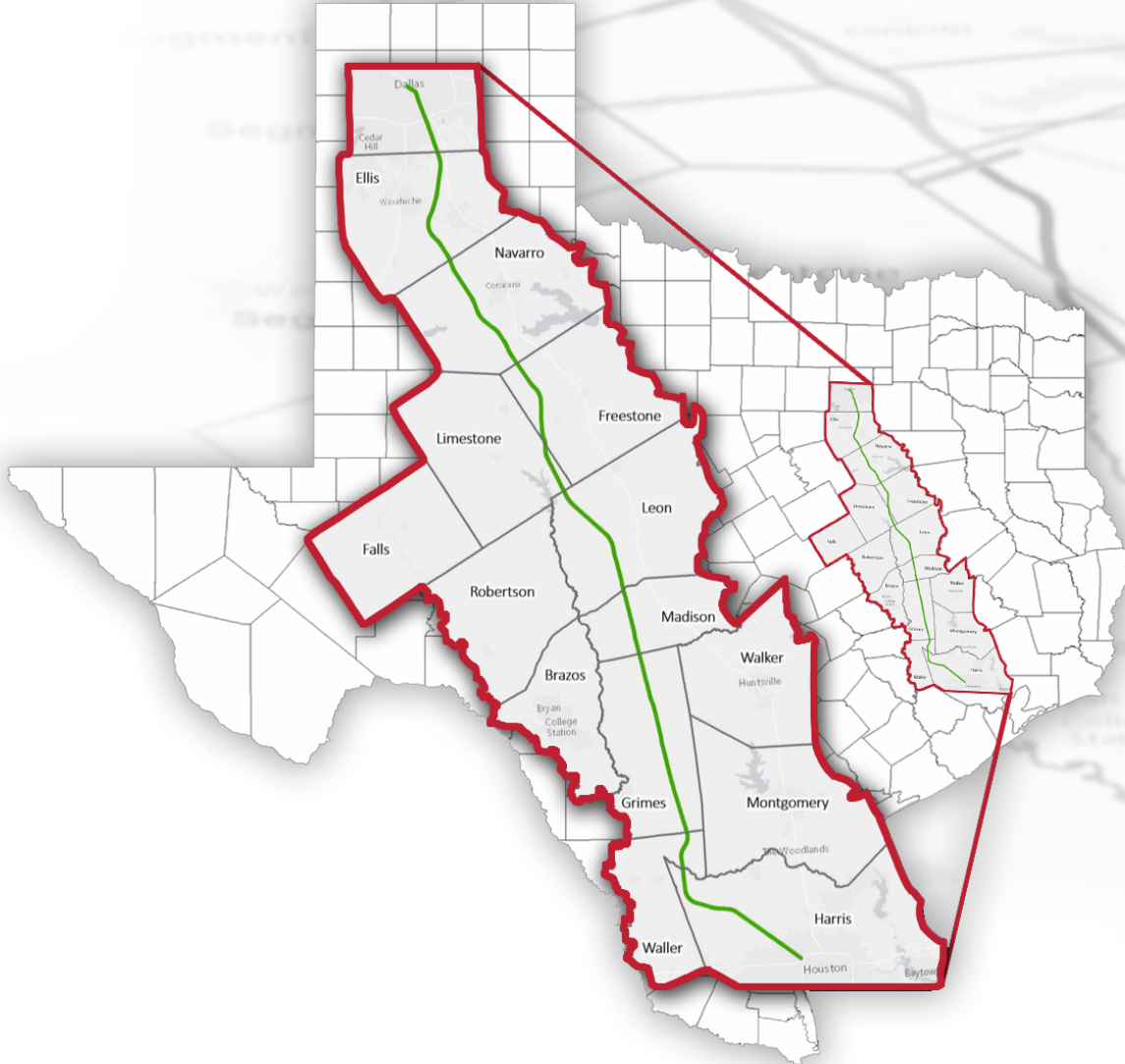
The Train is Moving Forward

More than 1,500 Direct Jobs Once Operational



Building Relationships While Building the Train

The Train is Moving Forward



“I’m certainly in favor of it, if it could save one life.”

Terry, Grimes County Resident



“It was strictly a win-win situation for us, and I think for Texas.”

Debra & Johnny, Madison County landowners



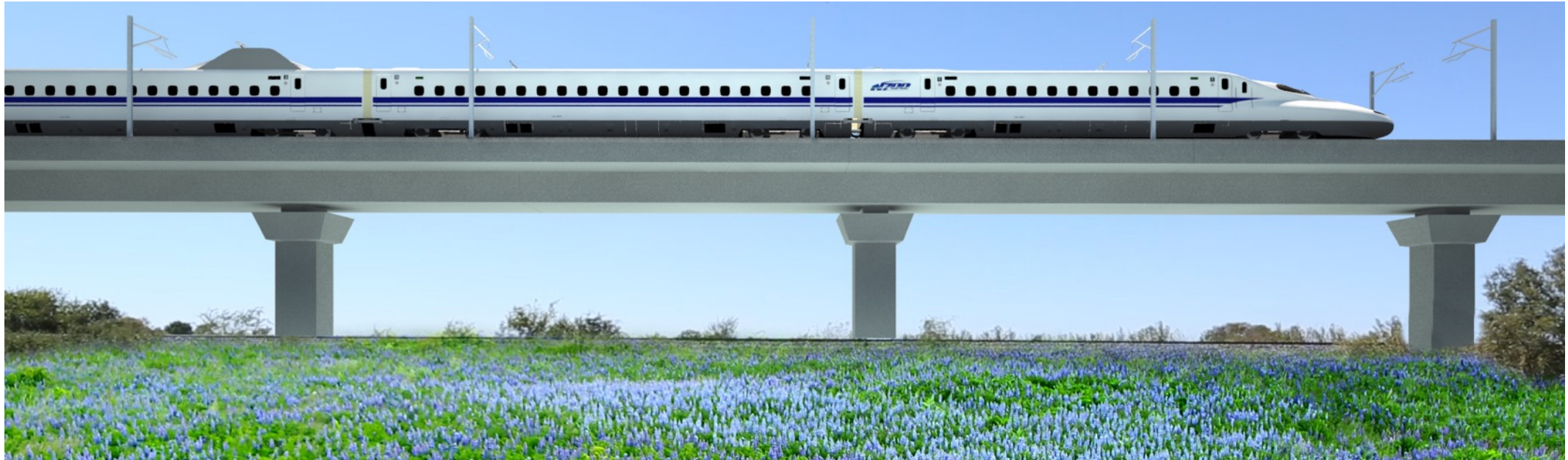
“It’s a great opportunity for Texans to travel our state.”

Alicia, Grimes County property owner

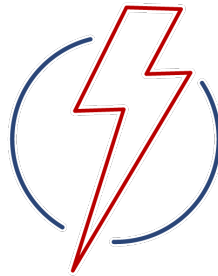


GOOD FOR TEXAS
AND THE U.S.

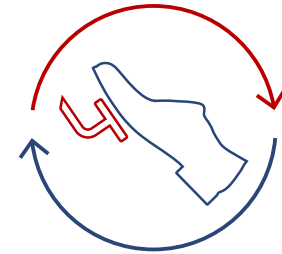
High Speed, Low Impact



Fewer cars,
less emissions



Fully electric



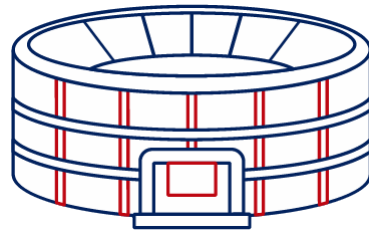
Regenerative
braking

Benefits Spread Across the State

Jobs, Revenue and Opportunity for Texas

\$36B

In Economic Impact



Equivalent to
84 Super Bowls

10

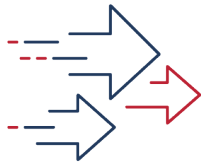
Counties



First Responders
Training & Equipment

North Texas Station:

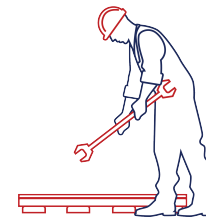
A Catalyst for Growth



High Speed Hub



**Neighborhood
Transformation**



Job Creation

Be an Advocate for Your Train

Join Us to Stay Informed

Text TRAIN to 52886



**Share Your
Feedback**



**Give a
Testimonial**



**Sign Up to
Work on the Train**

www.TexasCentral.com