



FORT WORTH DISTRICT

Transportation Highlights

Greg Cedillo, P.E.

Construction Director

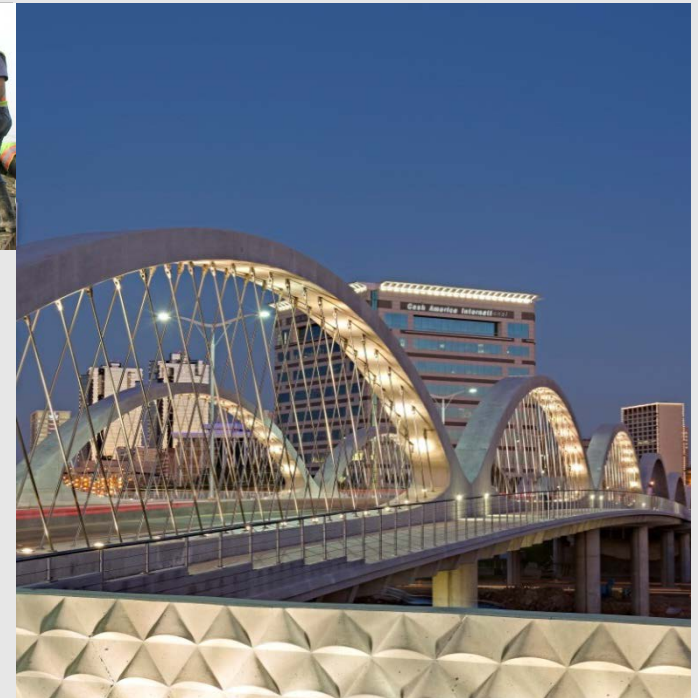


Photo by Liam Frederick



Our Mission

Through collaboration and leadership, we deliver a safe, reliable, and integrated transportation system that enables the movement of people and goods.

Our Values

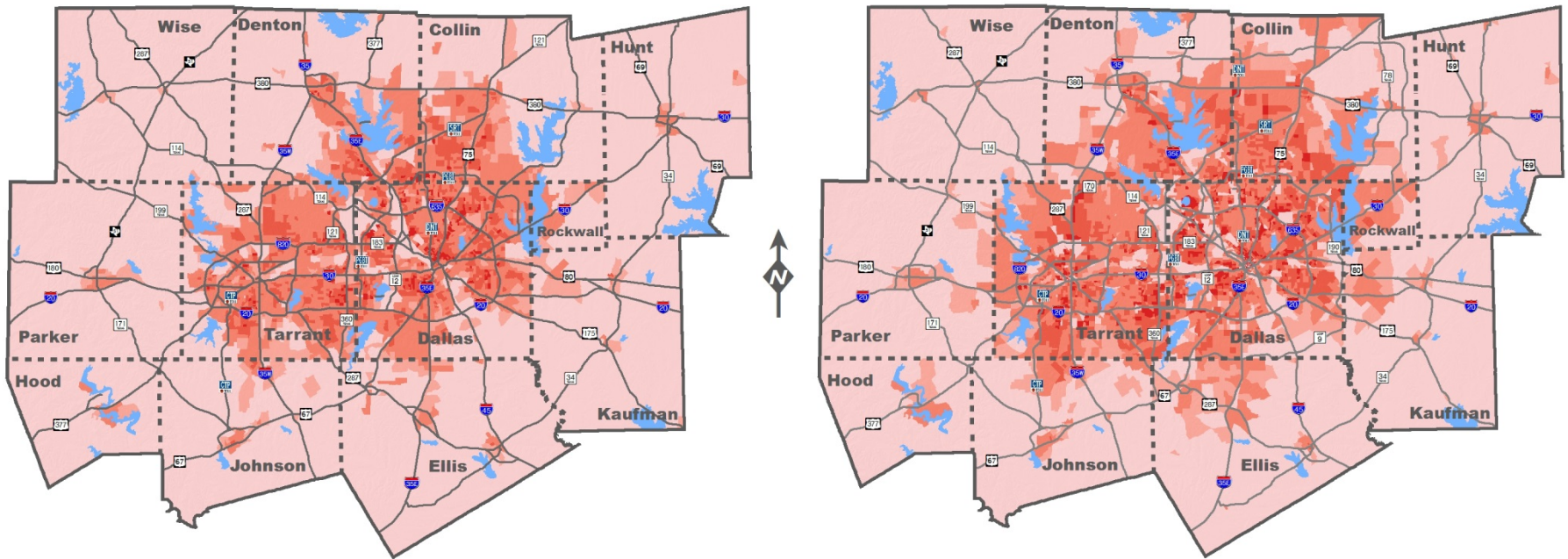
- People
- Accountability
- Trust
- Honesty



Population Density

2017

2040



Population density in persons per square mile by Traffic Survey Zone

Source: NCTCOG 2040 Demographic Forecast



District Statistics

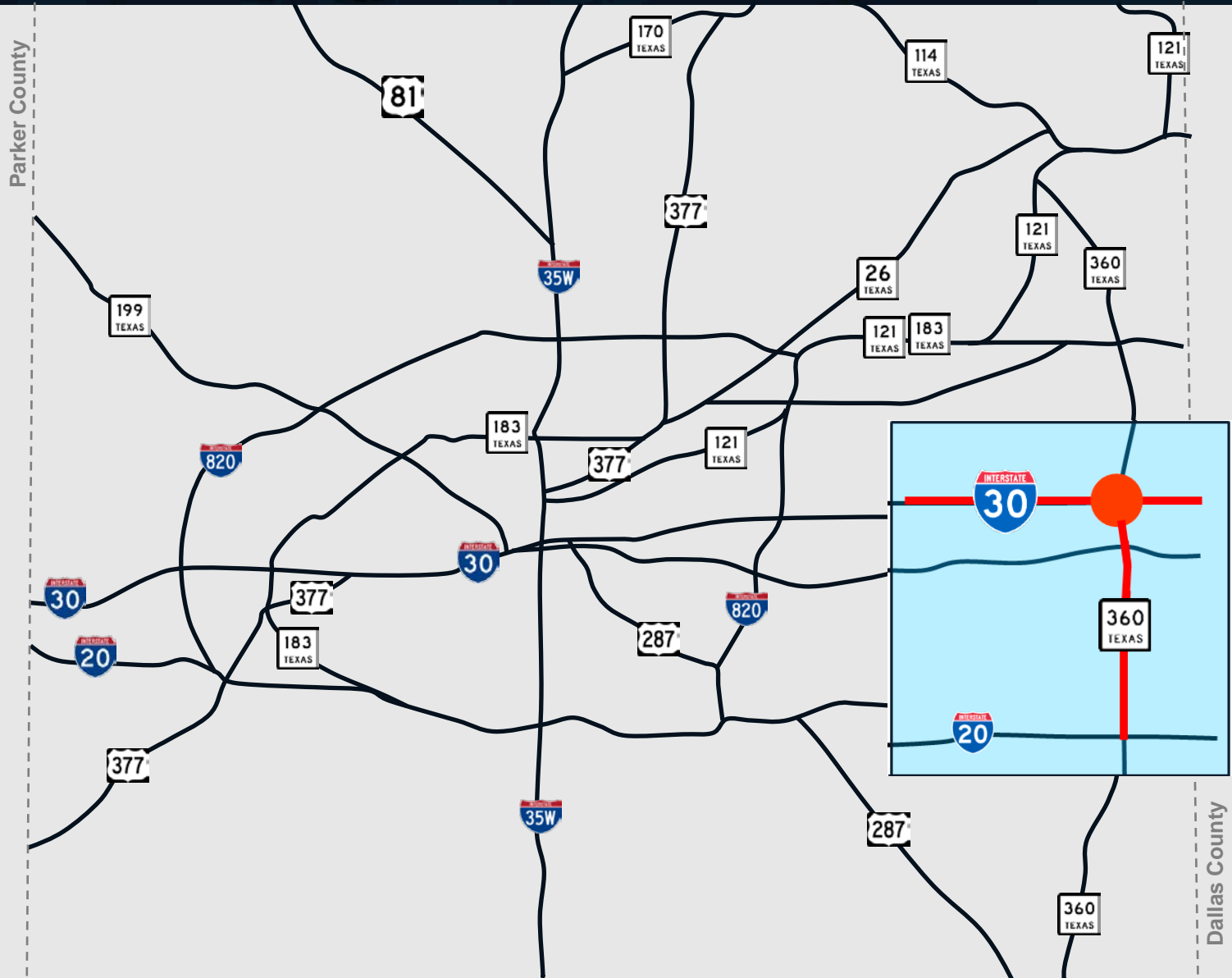
Est. Annual Construction Letting: **\$400 million**

Total Contracts: **\$3.7 billion** (includes CDAs)

Avg. Project Completion: **51%**

Avg. Annual Maintenance Budget: **\$120 million**

Interstate 30 and SH 360



I-30/Three Bridges

- Transformed old portion of DFW Turnpike into a modern Texas highway
- New bridges
 - Center Street
 - Baird Farm Road
 - Collins Street
- Continuous one-way frontage roads
- TEXpress Lanes
- Partnership between TxDOT, the city of Arlington and NCTCOG
- Construction cost: **\$165M**
- Opened: **2010**



Center Street Bridge



Murals



Pedestrian Elements



I-30/SH 360 Interchange

- Groundbreaking: **March 2, 2016**
- Est. completion: **2020**
- Total cost: **\$233M**



Keep30360Moving

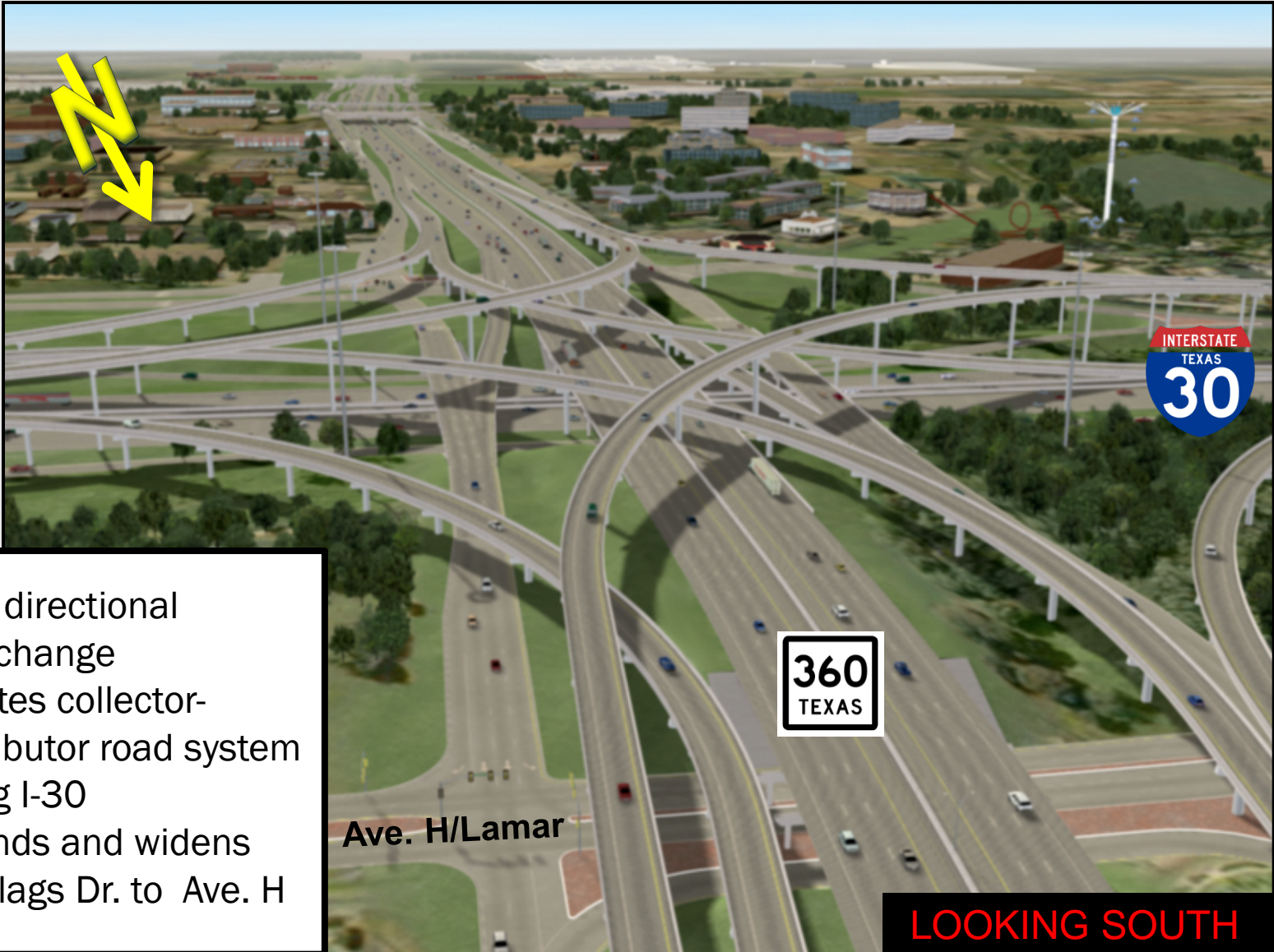
Lane closures and updates:
www.Keep30360Moving.org



I-30/SH 360 Interchange Construction

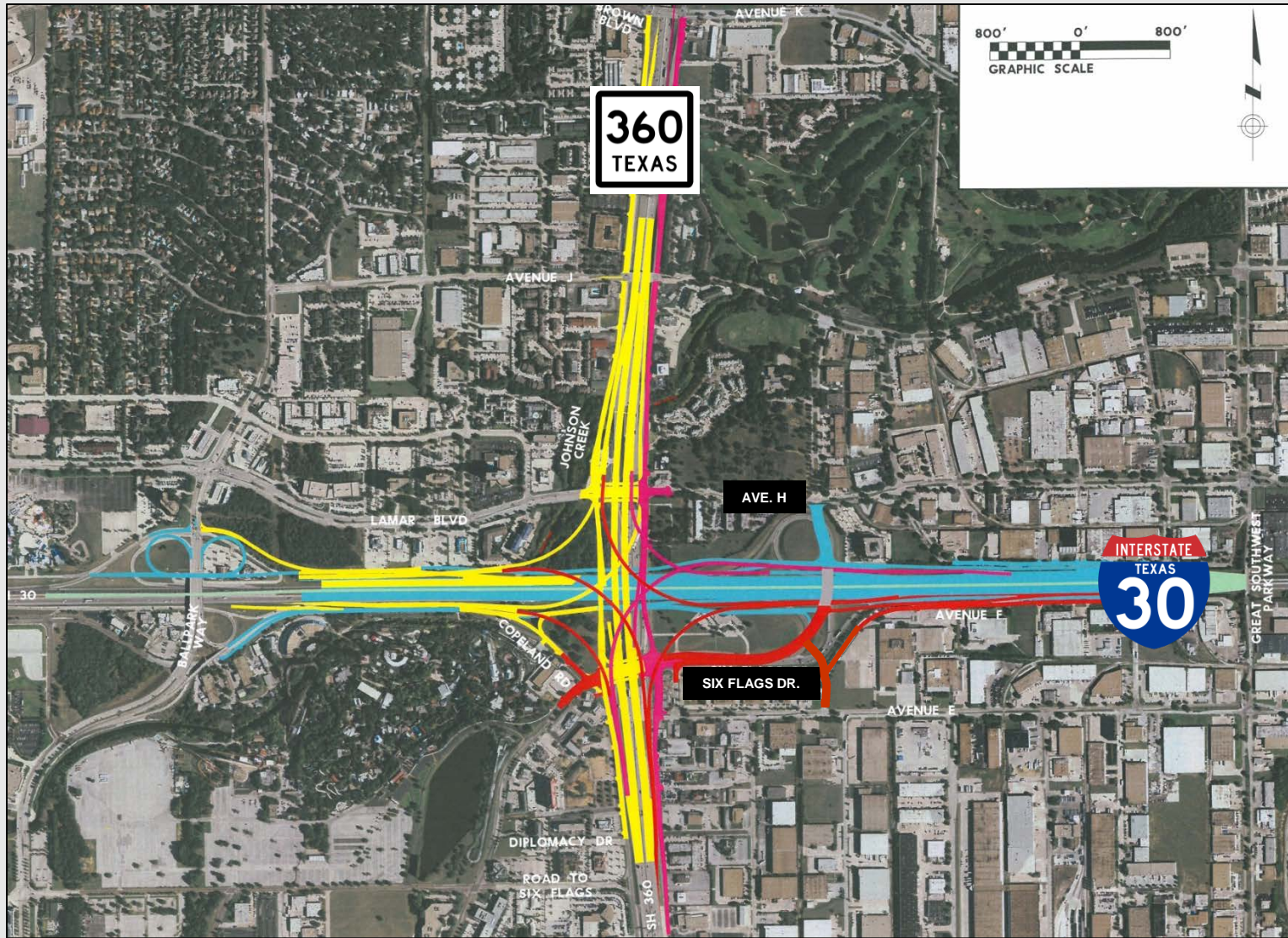


I-30/SH 360 Interchange



- Fully directional interchange
- Creates collector-distributor road system along I-30
- Extends and widens Six Flags Dr. to Ave. H

I-30/SH 360 Interchange



SH 360 from ½ mile north of Randol Mill Rd to I-20

- Add one mainlane each direction with ramp improvements
- Est. construction cost: **\$60M**
- Est. award: **February 2018**
- Est. completion: **2021**



NTE Project Overview: I-35W

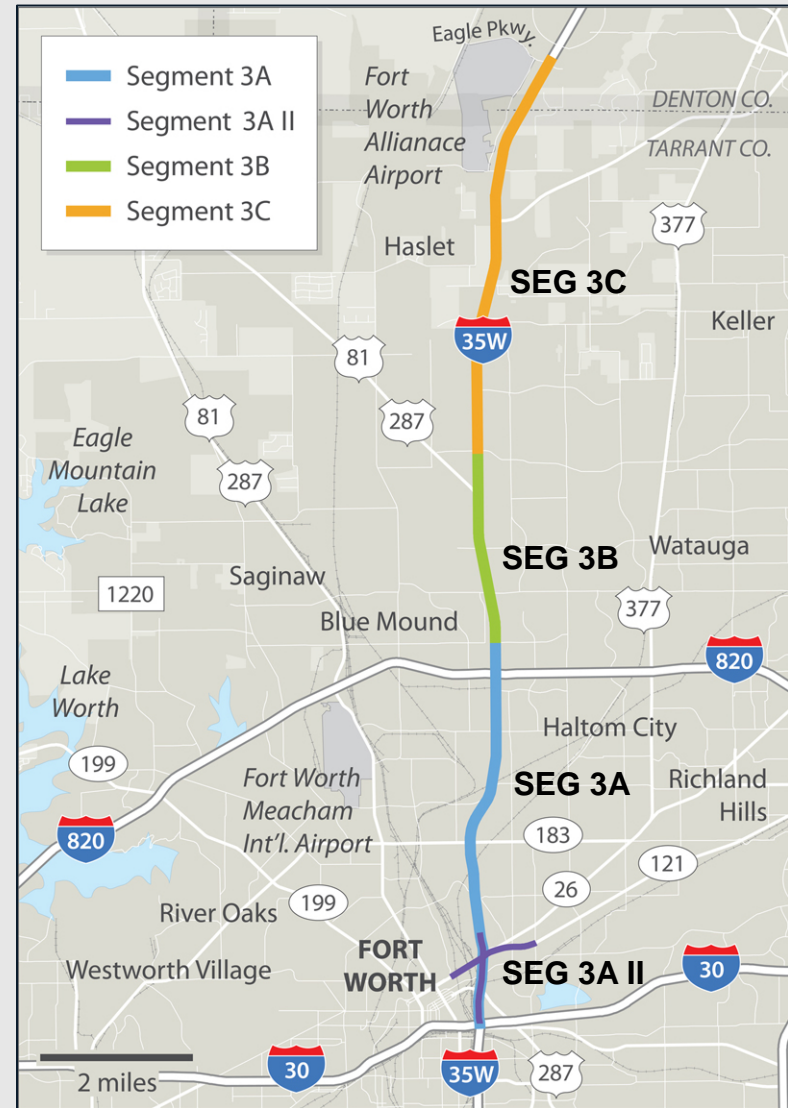
I-30 to north of I-820

(includes I-35W/I-820 Interchange)

- **\$1.4B**
- Construction, O&M, Tolling & ITS by Developer

North of I-820 to US 81/287

- **\$244M**
- Construction by TxDOT
- O&M, Tolling & ITS by Developer



Future I-35W Lanes at Railroad Crossing near Long Ave



US 287 at I-35W near Downtown Fort Worth

ClickIt OR Ticket



I-35W/820 Interchange



Future TEXpress Lanes at Western Center Blvd



South of I-820

- Construction began: **July 2014**
- 89 percent of construction complete as of January 2018
- ROW acquisition complete
- Est. completion: **Late 2018**

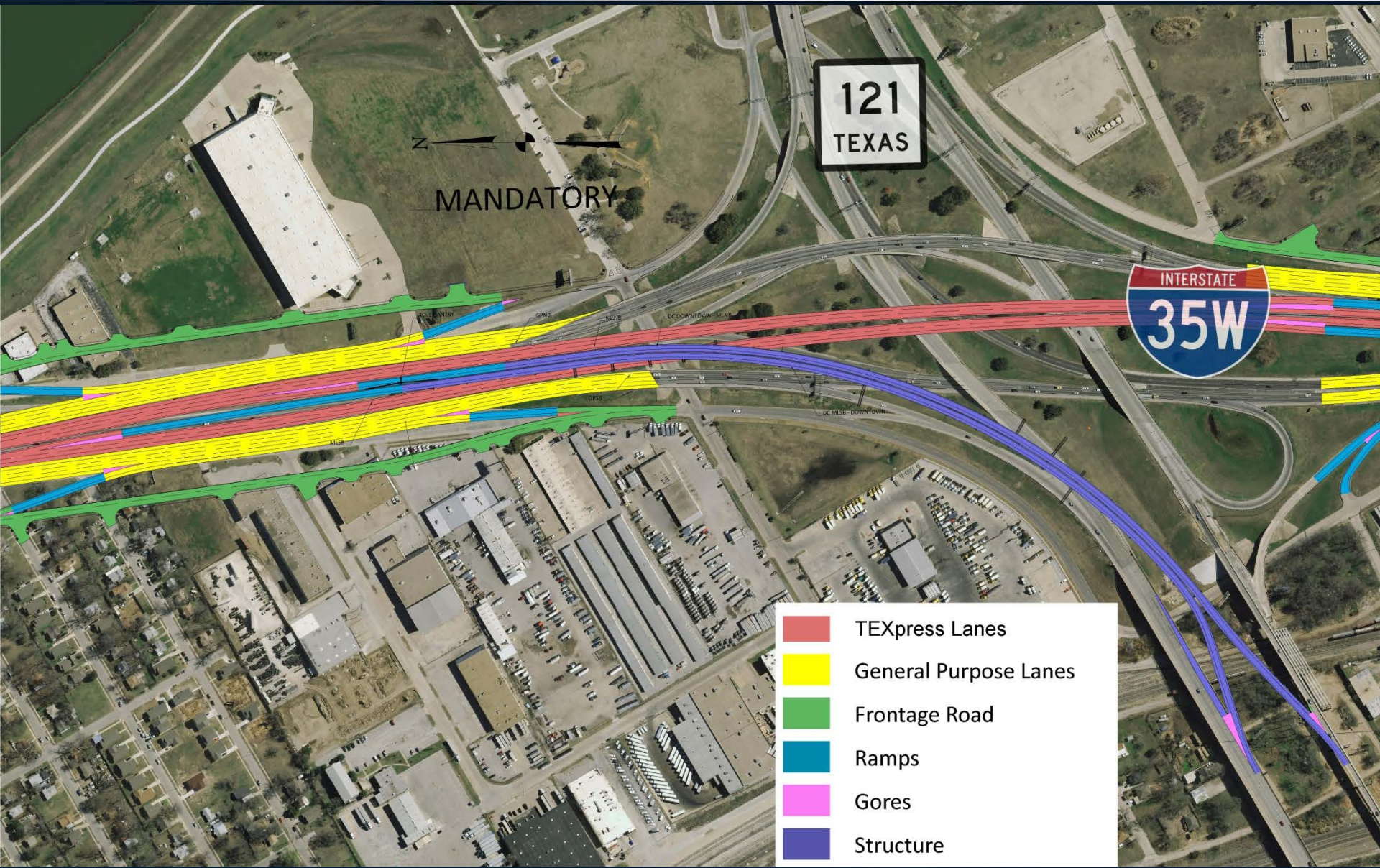
North of I-820

- Substantial completion: **December 2016**
- Final pavement: **May/June 2017**

Lane closures are posted at:
www.northtarrantexpress.com



I-35W at Belknap Street



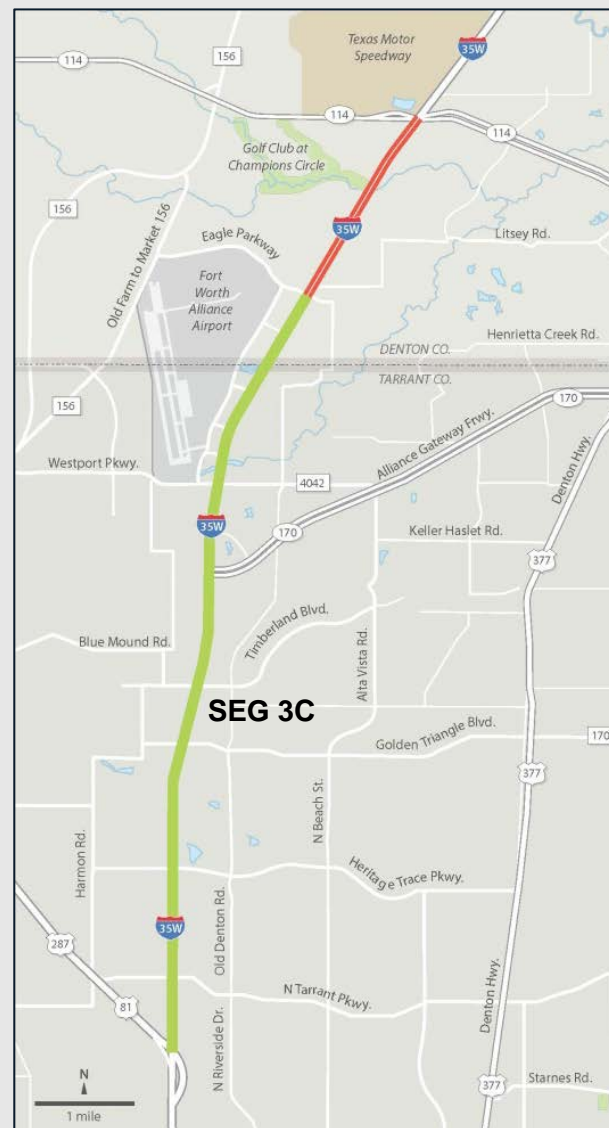
Segment 3C

Segment 3C (I-35W) proposed

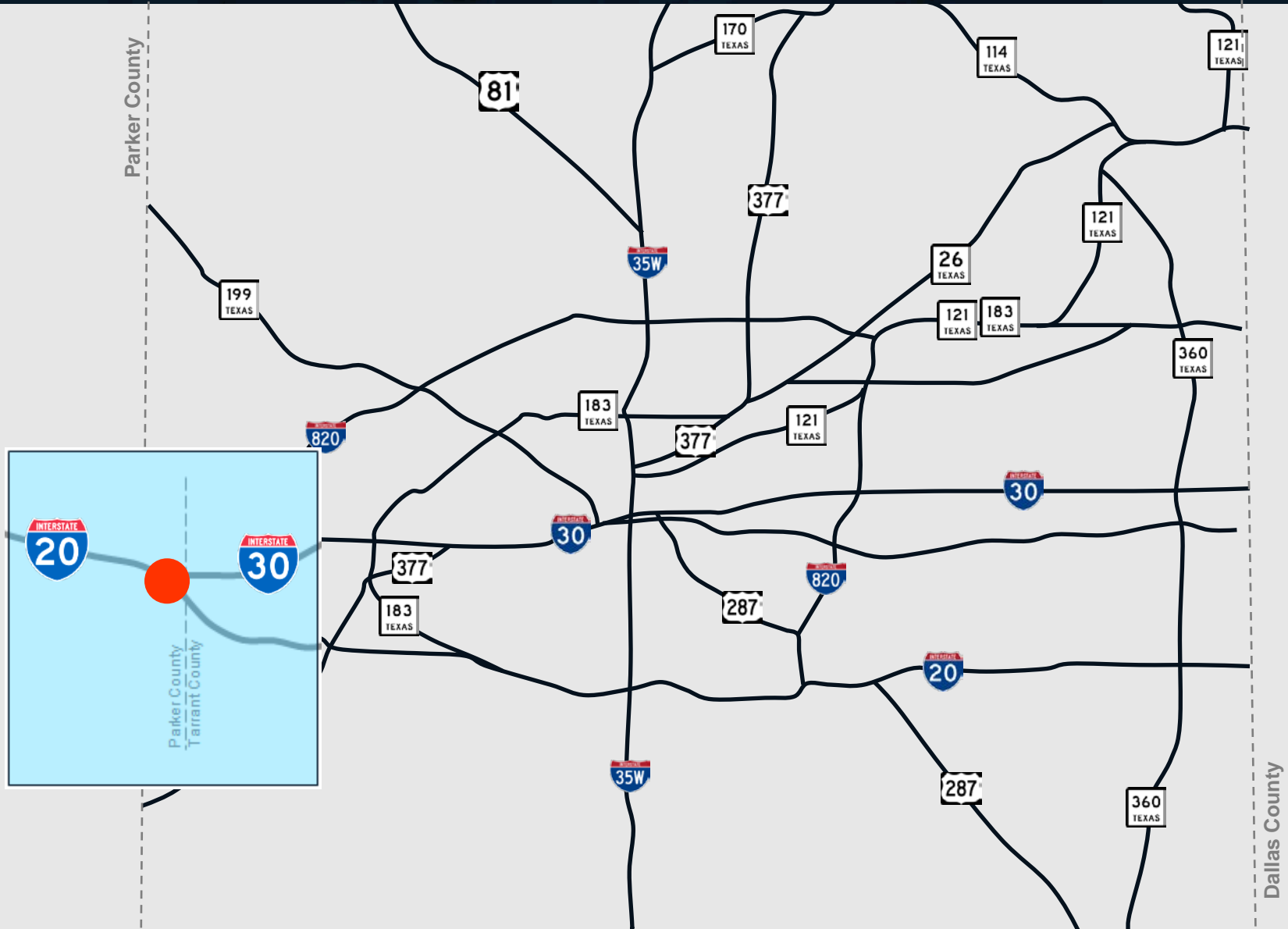
US 81/287 to Eagle Pkwy

- 8 miles
- Est. total cost: **\$700M**
- Est. construction: **2018**

■
*New frontage roads from Eagle Pkwy to SH 114 for \$20M – 3.5 miles.



Interstate 30 at Walsh Ranch Pkwy

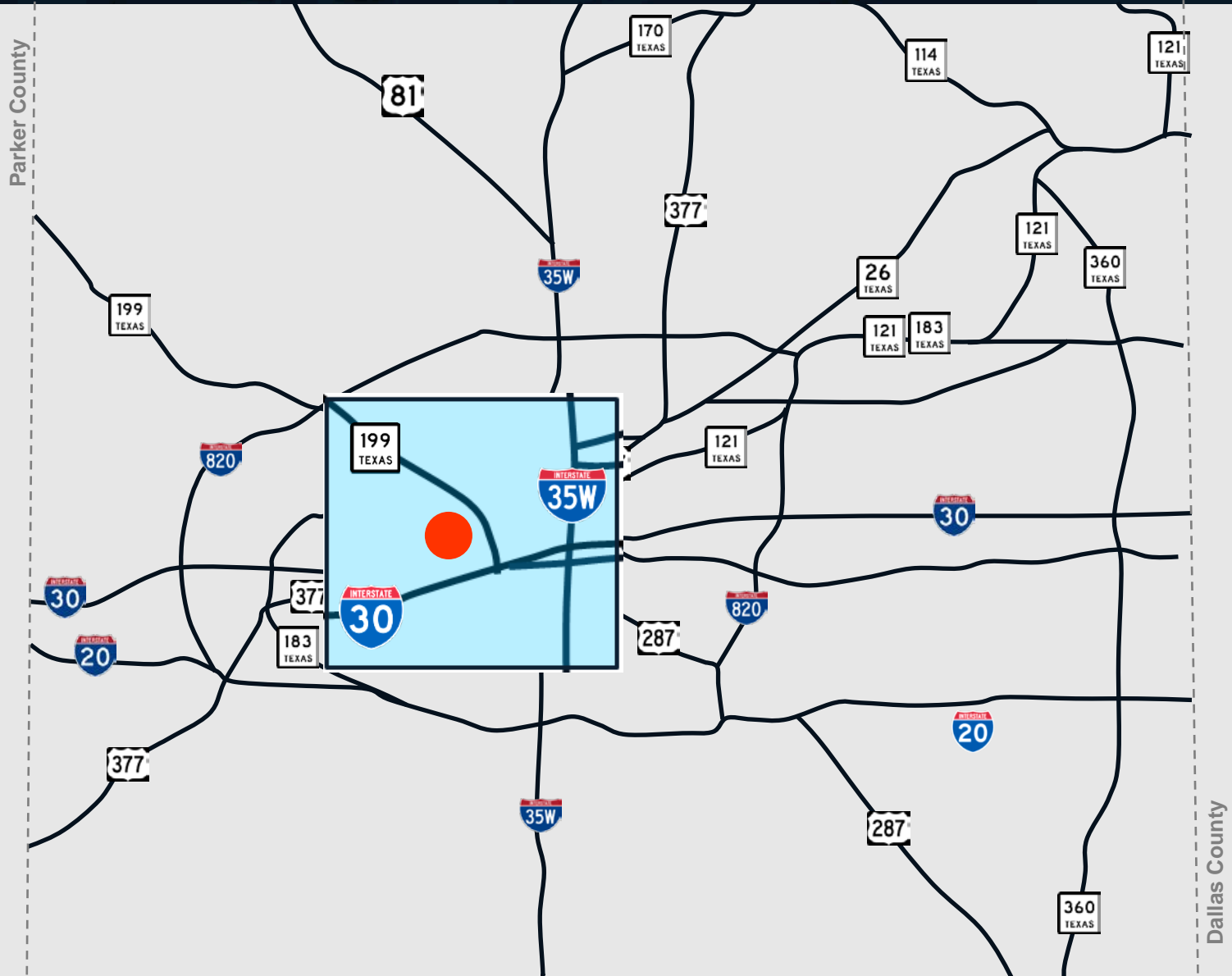


At Walsh Ranch Pkwy

- New bridge
- Construction cost: **\$15M**
- Construction began:
October 2013
- Completed:
November 2015



West 7th Street Bridge



West 7th Street Bridge

- World's first pre-cast network arch bridge
 - Replaced 99-year-old bridge with “thru arch” signature bridge
 - Improved safety and pedestrian access
 - Built offsite to minimize bridge closure to 123 days
- Partnership between TxDOT and the city of Fort Worth
- Construction cost: **\$26M**
- Opened: **2013**



Offsite Construction of Arches



West 7th Street Bridge



Community Ribbon Cutting



Opening Celebration



THANK YOU



Fort Worth District