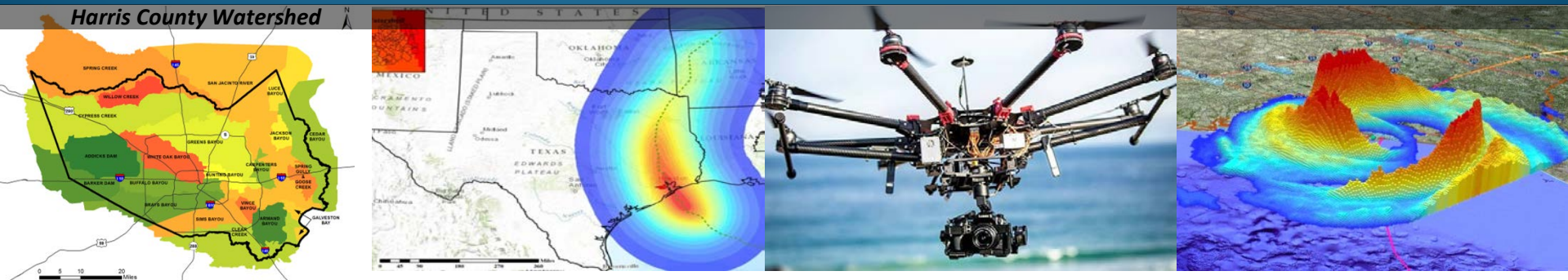


# What We Learned from *Hurricane Harvey* for *Smart Cities*?



Presented at 18<sup>th</sup> Annual SAME Infrastructure Forum

February 2<sup>nd</sup>, 2018

**Nick Z. Fang, Ph.D., P.E. Assistant Professor**

Water Resources Engineering  
Civil Engineering Department  
The University of Texas at Arlington

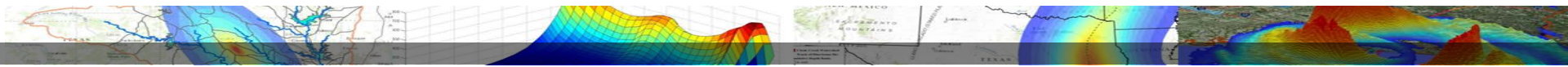


**FANG RESEARCH GROUP**  
—WATER RESOURCES  
The University of Texas at Arlington

Society of  
**SAME**  
American Military Engineers  
Sustaining Member since 1958

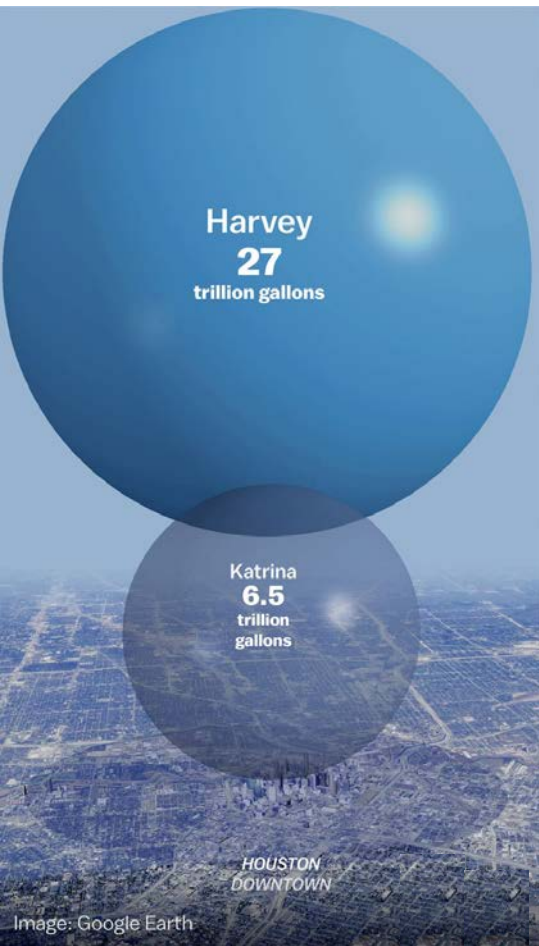


UNIVERSITY OF  
**TEXAS**  
ARLINGTON

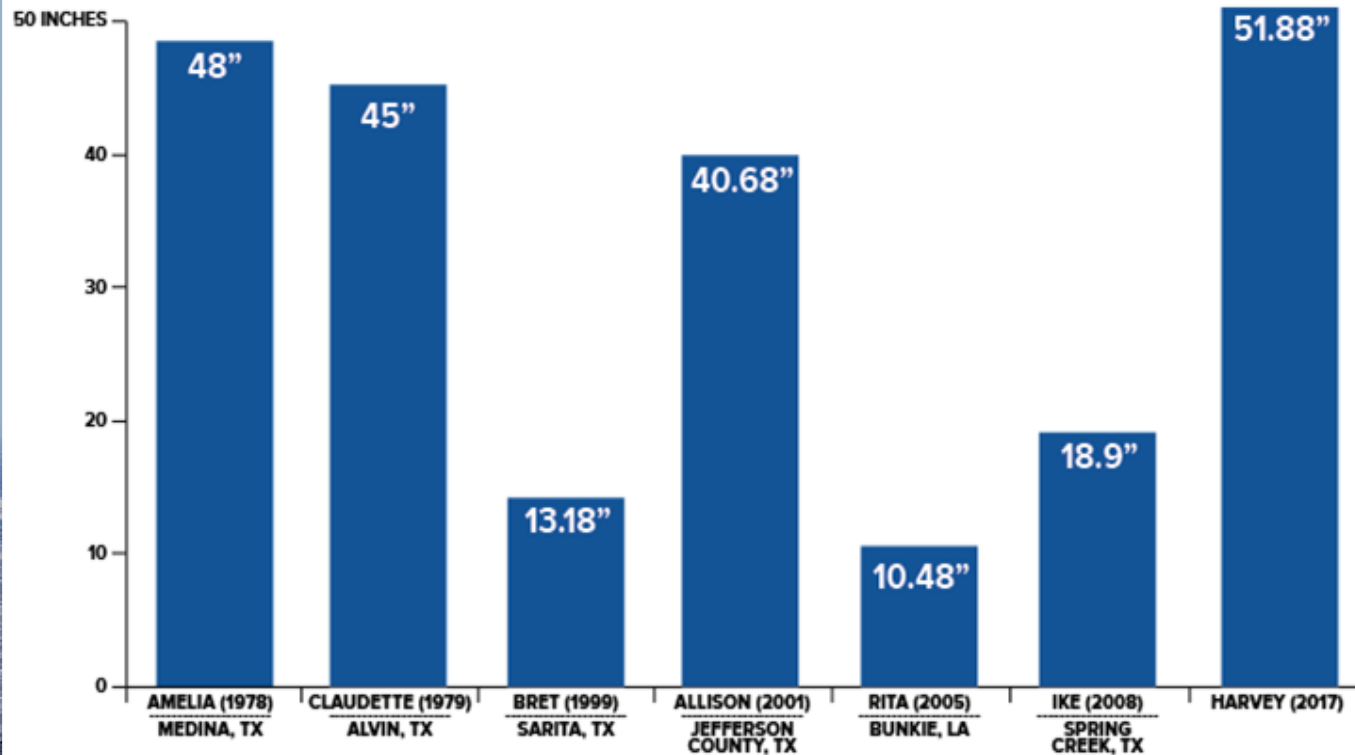
An aerial photograph of a residential neighborhood in Houston, Texas, completely inundated with floodwater. Houses are surrounded by water, with only their roofs and upper floors visible. The water is a murky brown color. The text is overlaid on this image.

THE POTENTIAL ESTIMATED  
DAMAGE IN HOUSTON  
ALONE: \$97 BILLION

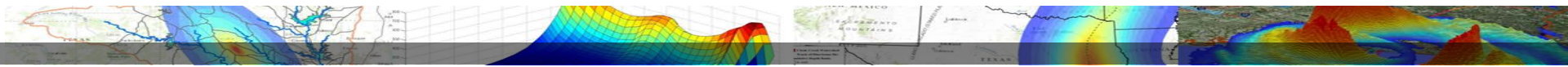




## RAINFALL FROM PAST GULF COAST STORMS



Source: NOAA



# Hurricane Harvey Flood Damages



Image Source: Houston Chronicle

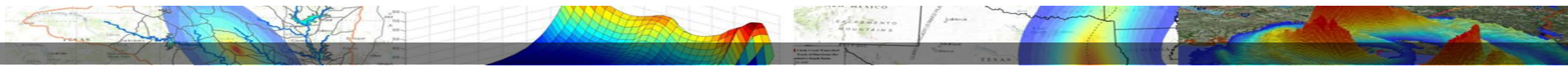




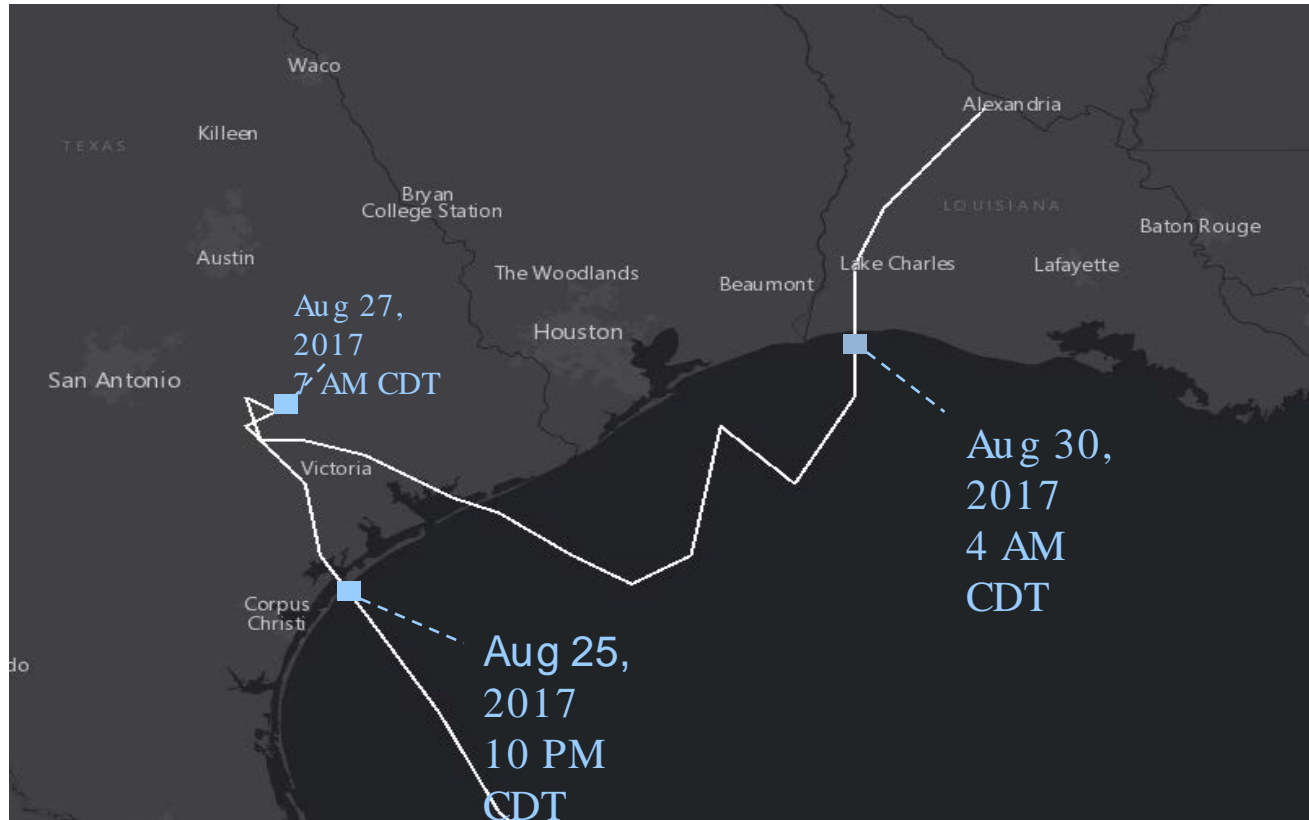
## Notable Gulf Coast Hurricanes

Hurricane	Year	Date of Landfall	Landfall Location	Saffir-Simpson Category	Max. sustained winds (mph)	Max. Storm tide (ft)	Max. Total rainfall (in)
<b>Katrina</b>	2005	29-Aug	LA	3	127	27.9	15.0
<b>Rita</b>	2005	24-Sep	TX	3	115	15.1	16.1
<b>Ivan</b>	2004	16-Sep	AL/FL	3	121	15.1	16.9
<b>Ike</b>	2008	13-Sep	TX	2	109	12.8	18.9
<b>Gustav</b>	2008	1-Sep	LA	2	104	13.1	20.9
<b>Isaac</b>	2012	29-Aug	LA	1	81	11.2	26.8
<b>Harvey</b>	<b>2017</b>	<b>25-Aug</b>	<b>TX</b>	<b>4</b>	<b>130</b>	<b>12.0</b>	<b>51.9</b>

**Adapted From:** Torres, J. M., Bass, B., Irza, N., Fang, Z., Proft, J., Dawson, C., . . . Bedient, P. (2015). Characterizing the hydraulic interactions of hurricane storm surge and rainfall–runoff for the Houston–Galveston region. *Coastal Engineering*, 106, 7–19. doi:10.1016/j.coastaleng.2015.09.004



# Hurricane Harvey Track (August 2017)





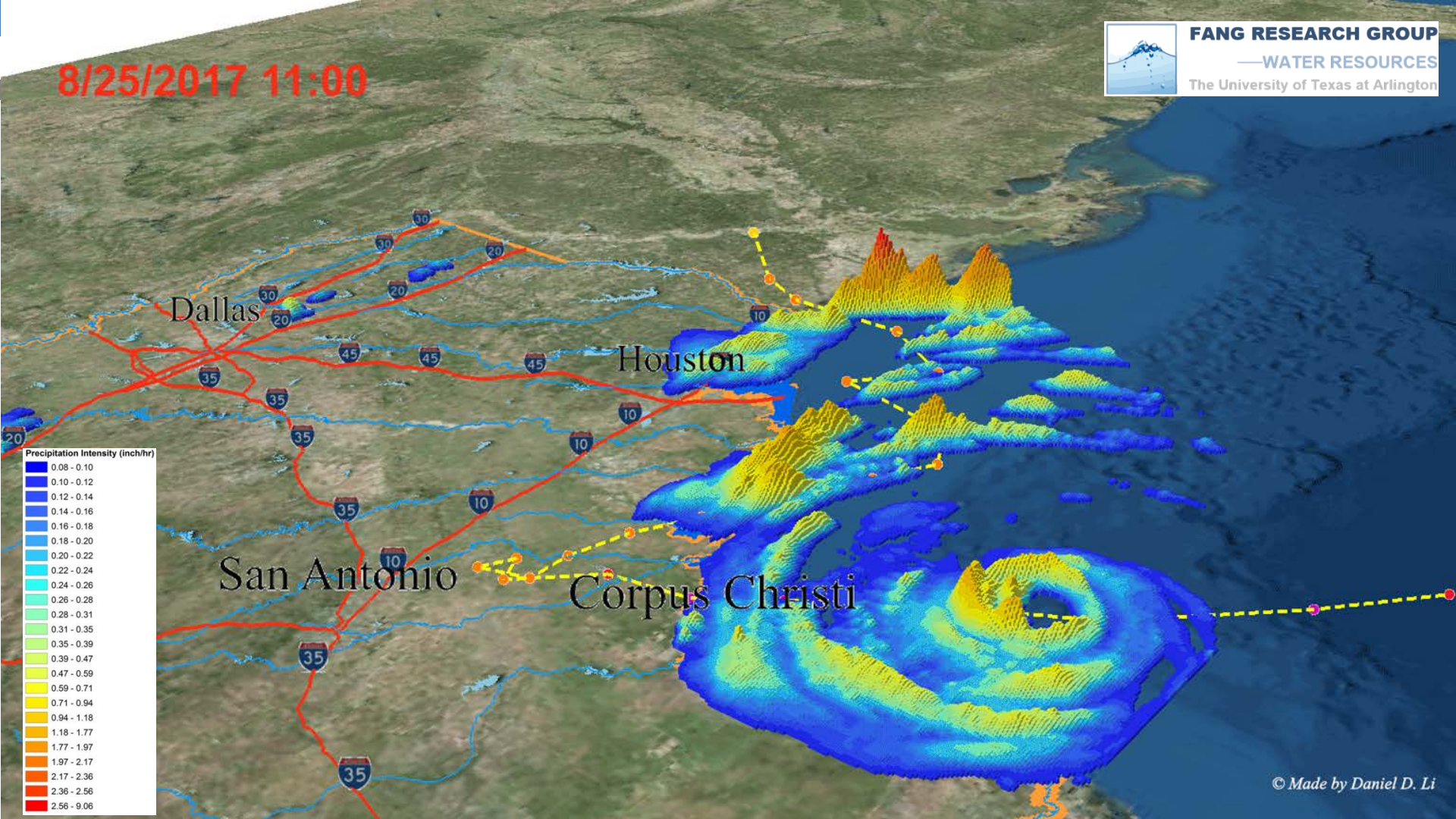
8/25/2017 11:00



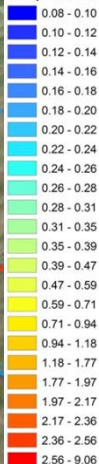
**FANG RESEARCH GROUP**

—WATER RESOURCES

The University of Texas at Arlington



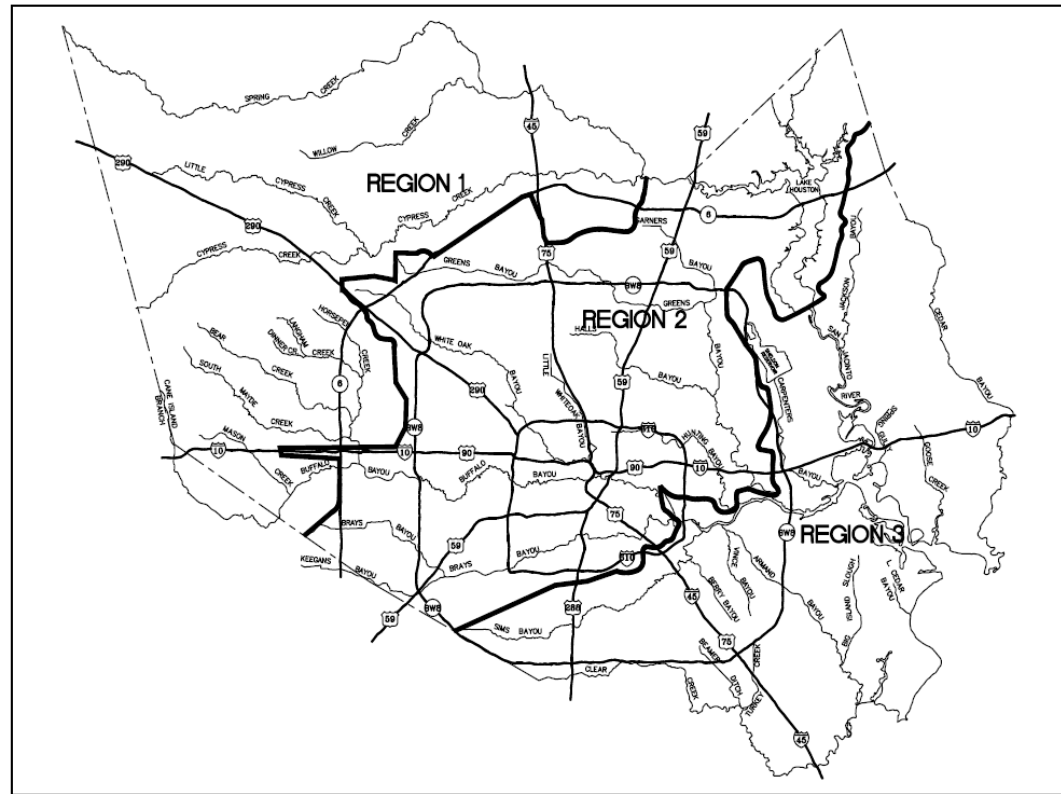
Precipitation Intensity (inch/hr)



© Made by Daniel D. Li

# Harris County Hydrologic Regions

Hydrologic Regions	Region 1	Region 2	Region 3
100-yr 24 hr	12.4	13.2	13.5
100-hr 4 days	14.9	15.9	16.9
500-hr 24 hr	17.7	18.9	19.3
500-hr 4 days	19.8	21.1	22.3

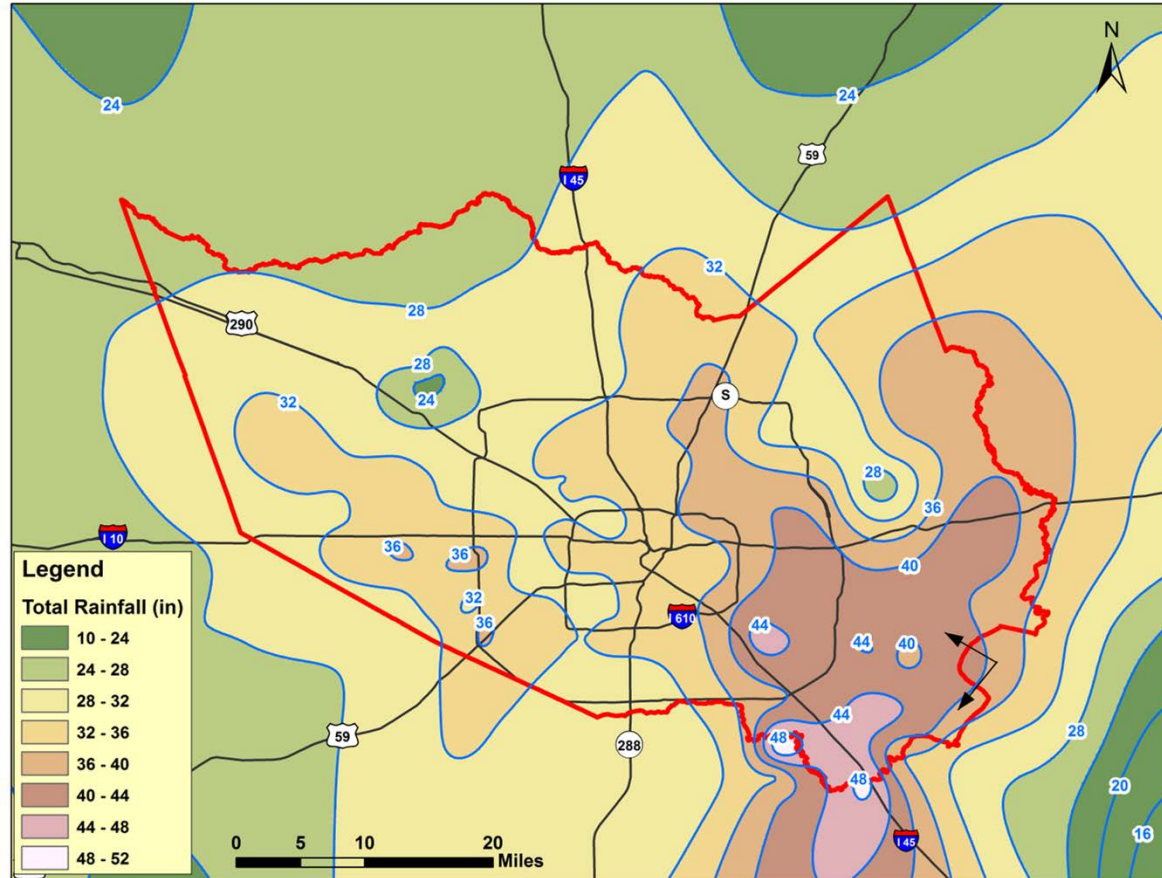
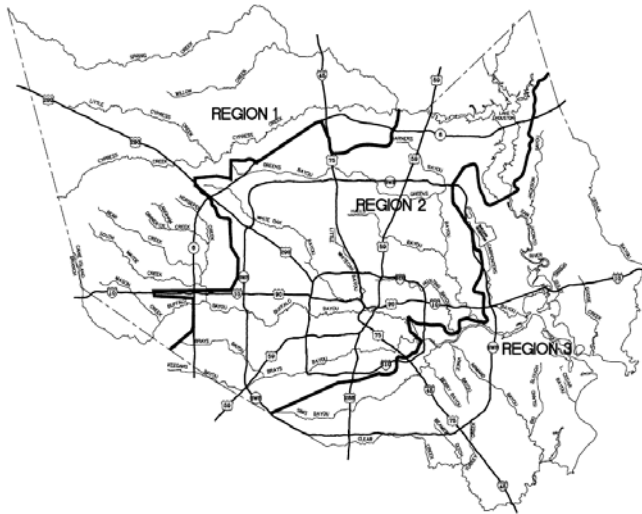


Source: TSARP

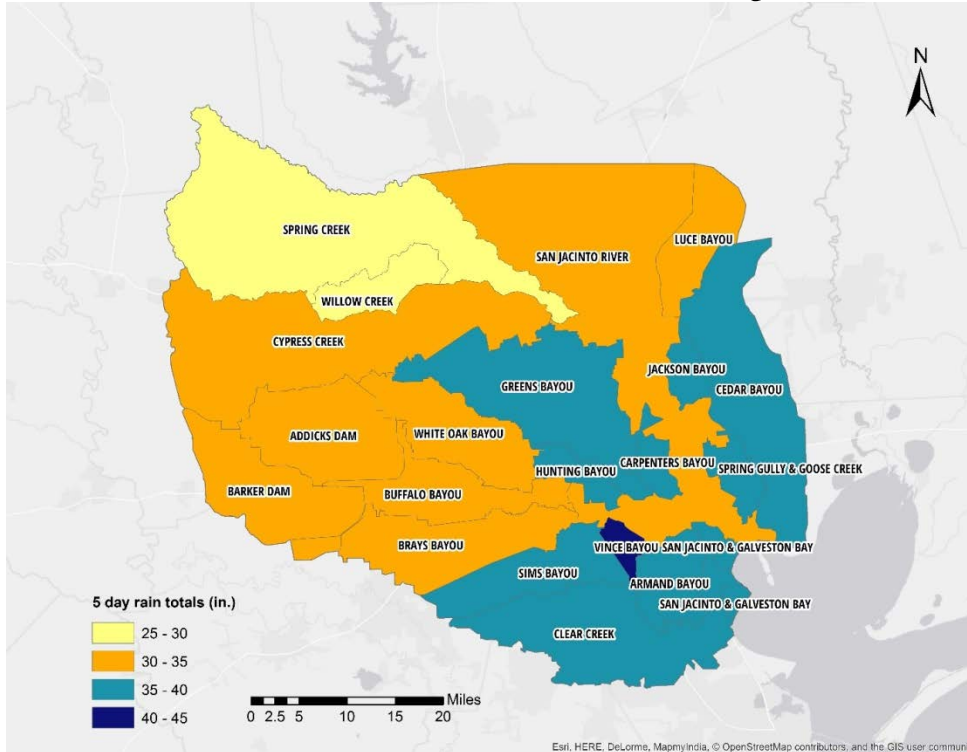


# Rainfall Contours

**Period: 120 hours**  
**From Aug 25<sup>th</sup> 12:00 AM**  
**to Aug 30<sup>th</sup> 12:00 AM**



# Hurricane Harvey Rainfall



## WATERSHED

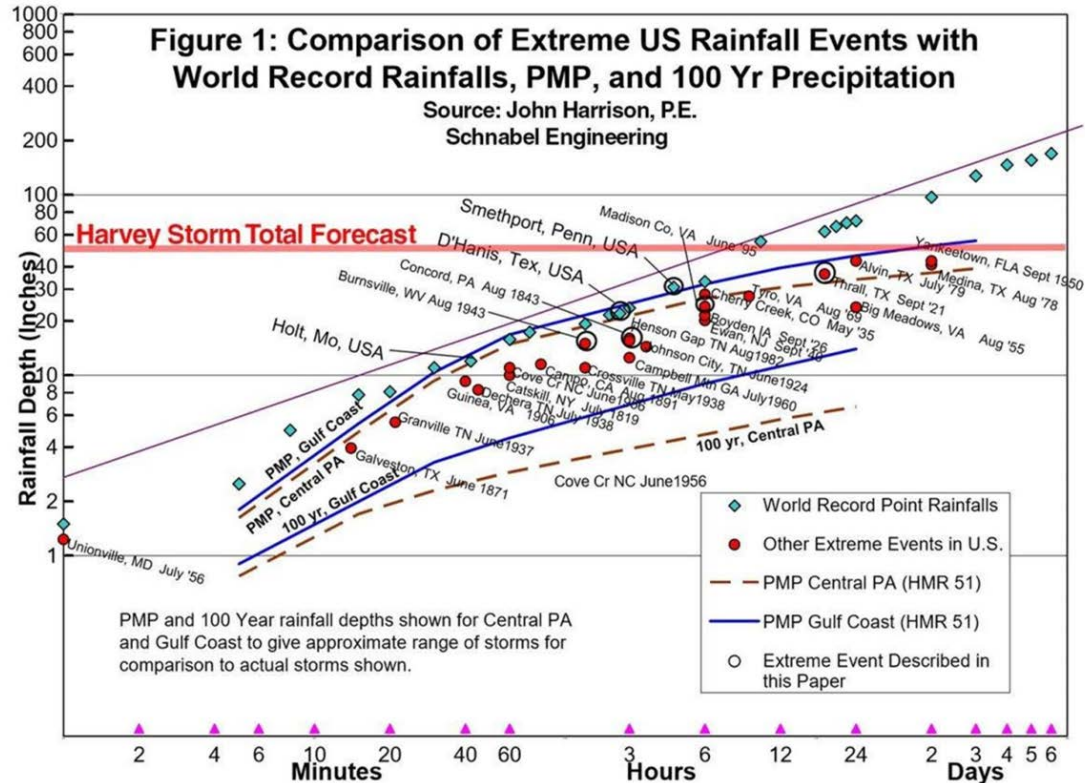
## 5-DAY RAINFALL (IN.)

SPRING CREEK	26.9
SAN JACINTO RIVER	30.9
CYPRESS CREEK	31.2
CEDAR BAYOU	37.2
GREENS BAYOU	35.3
WHITE OAK BAYOU	32.9
ADDICKS DAM	34.0
BARKER DAM	34.3
BUFFALO BAYOU	34.3
BRAYS BAYOU	34.9
SIMS BAYOU	36.4
SAN JACINTO & GALVESTON BAY	37.5
CLEAR CREEK	37.5

Rainfall totals from 8/25/- 8/30/2017 for Greater Houston Region watersheds (Data Source: NWS)

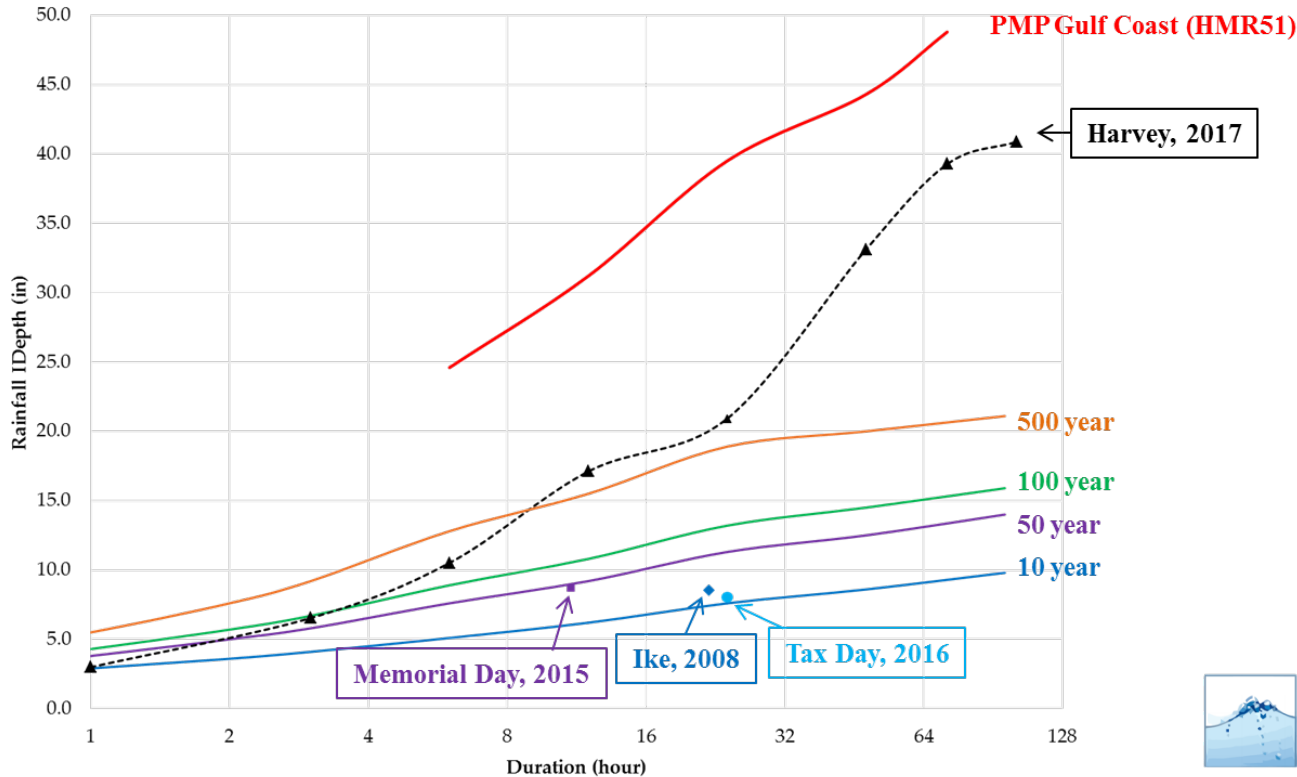
# Comparison of Extreme U.S. Precipitation Events with World Record Rainfalls, PMP, and 100-Yr Precipitation

It is difficult to imagine the extreme precipitation events that have led to the PMP estimates contained in NOAA's various HMR publications. In an effort to provide perspective on the magnitude and intensity of these storms, a sampling of extreme events are shown in the figure.

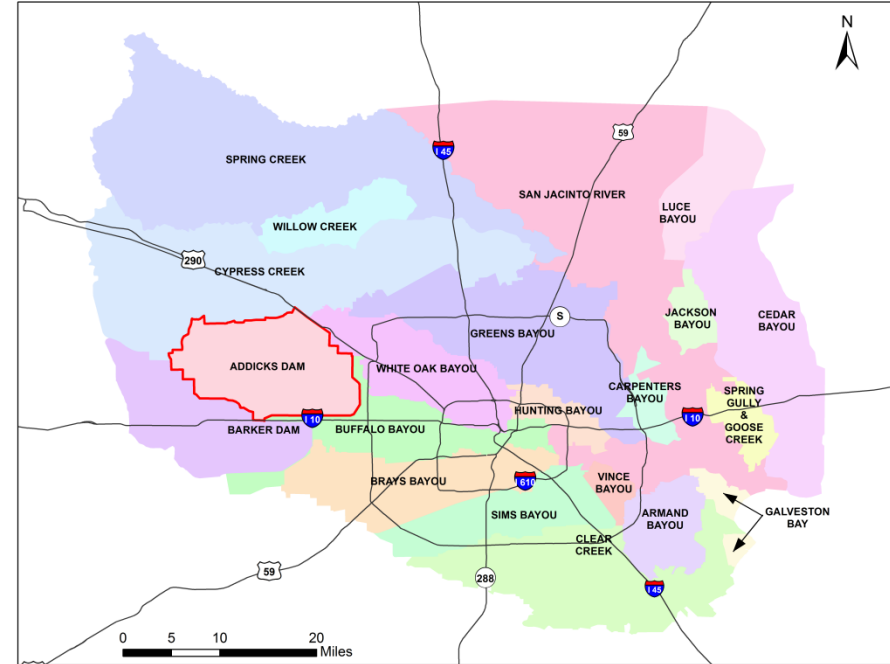
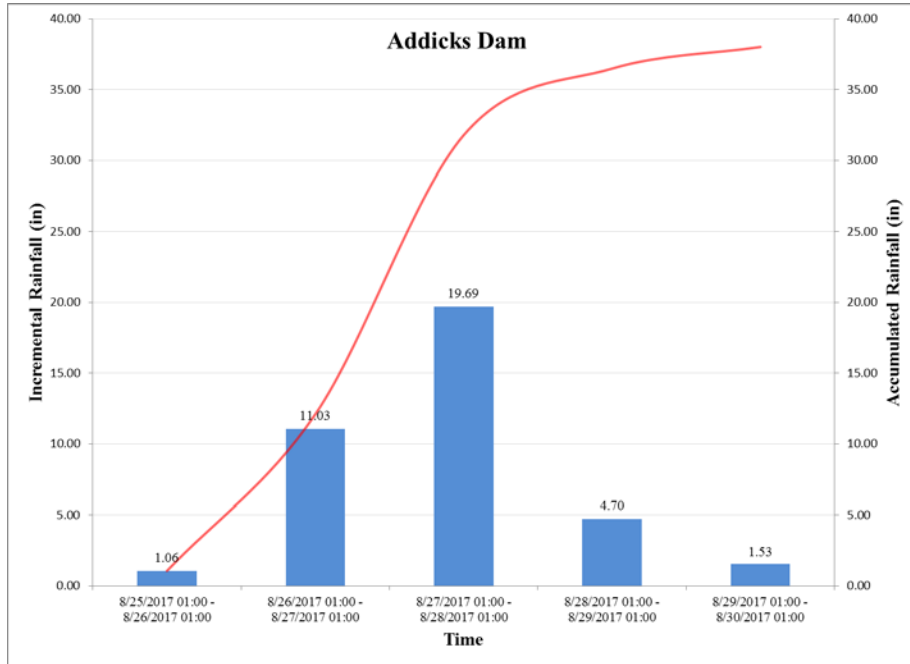




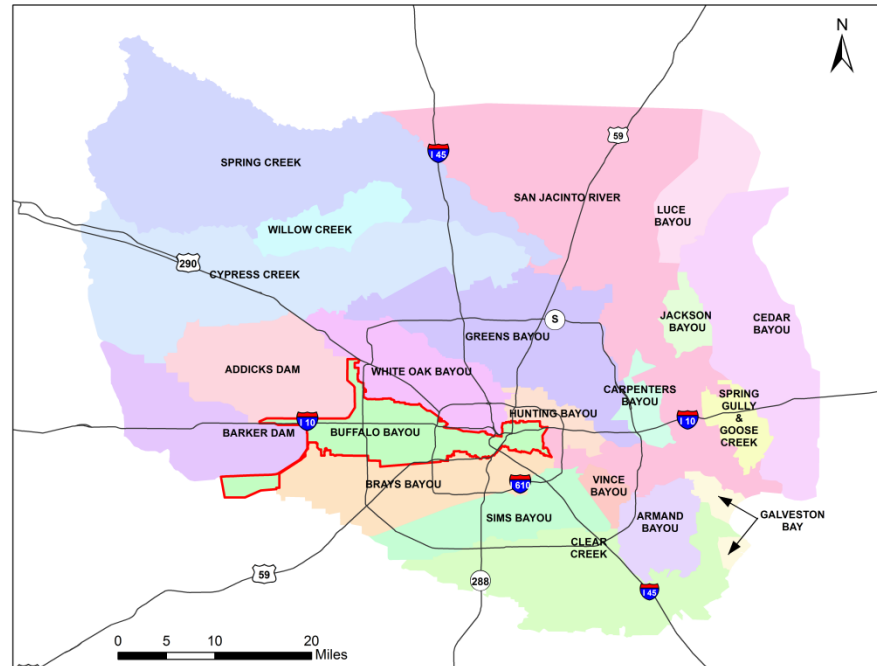
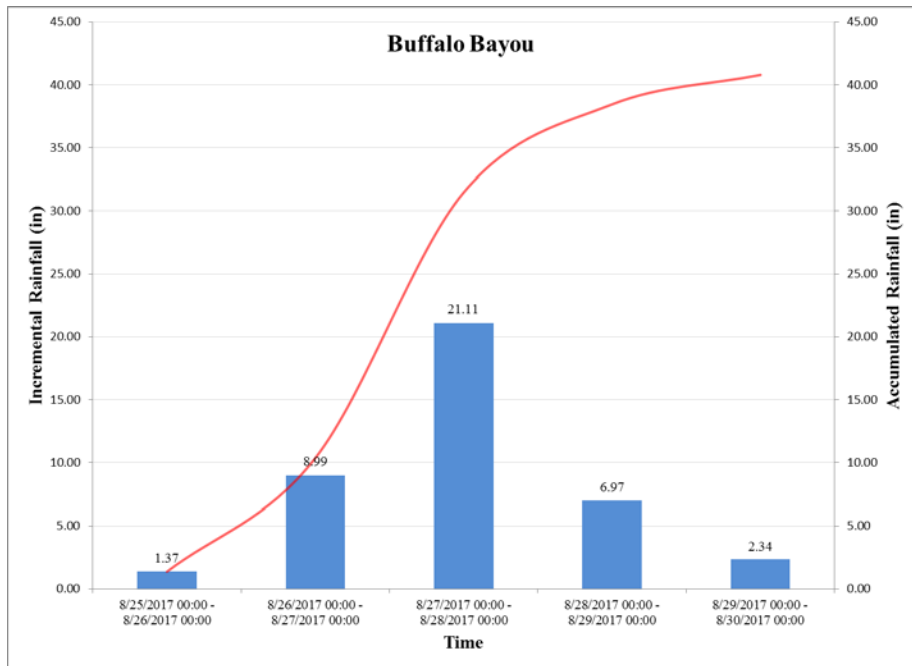
# Comparison of Harvey with Recent Extreme Rainfall Events, PMP, and Frequency Design Precipitation



# Maximum 24 hr Rainfall for Addicks Dam

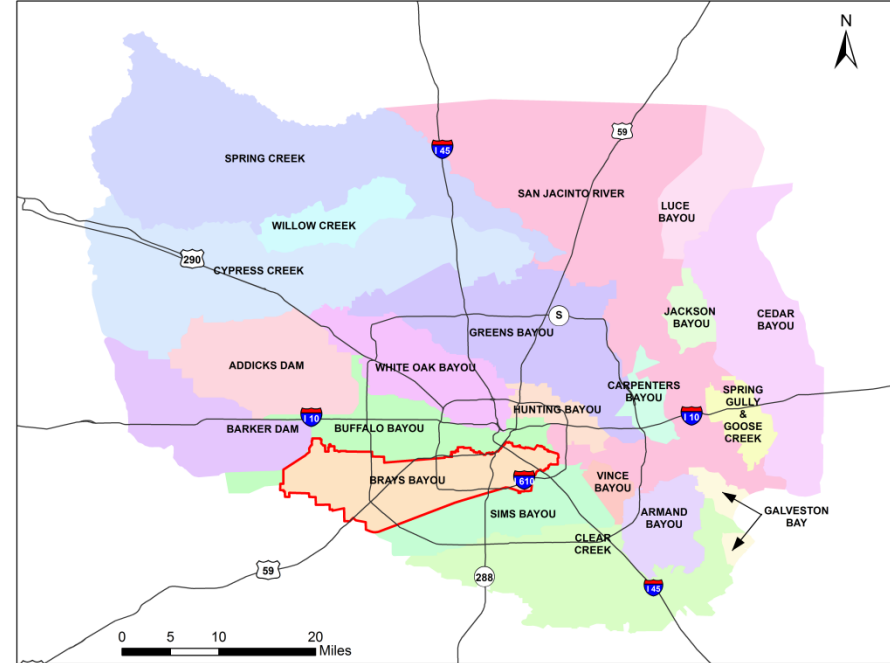
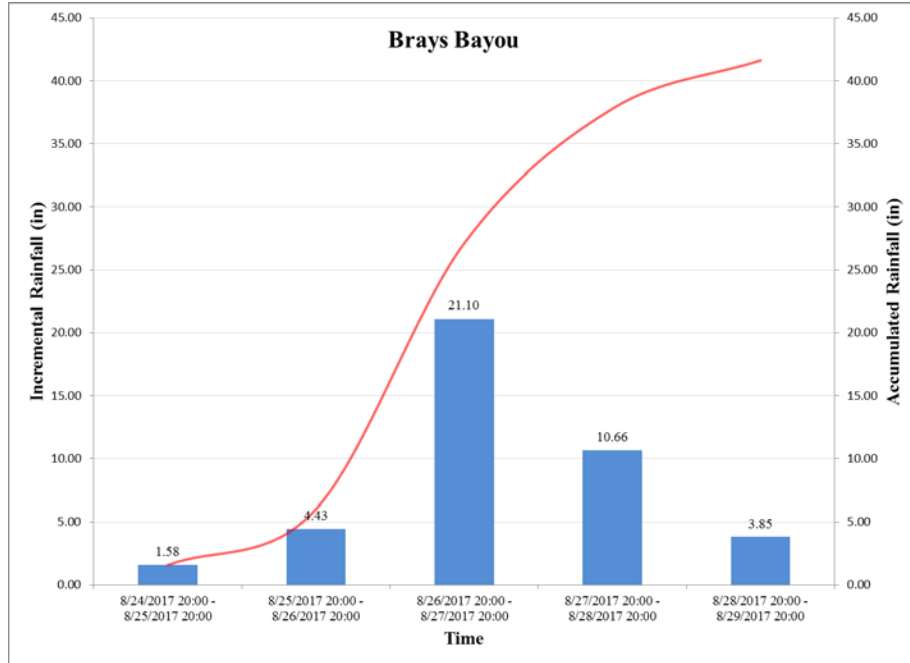


# Maximum 24 hr Rainfall for Buffalo Bayou

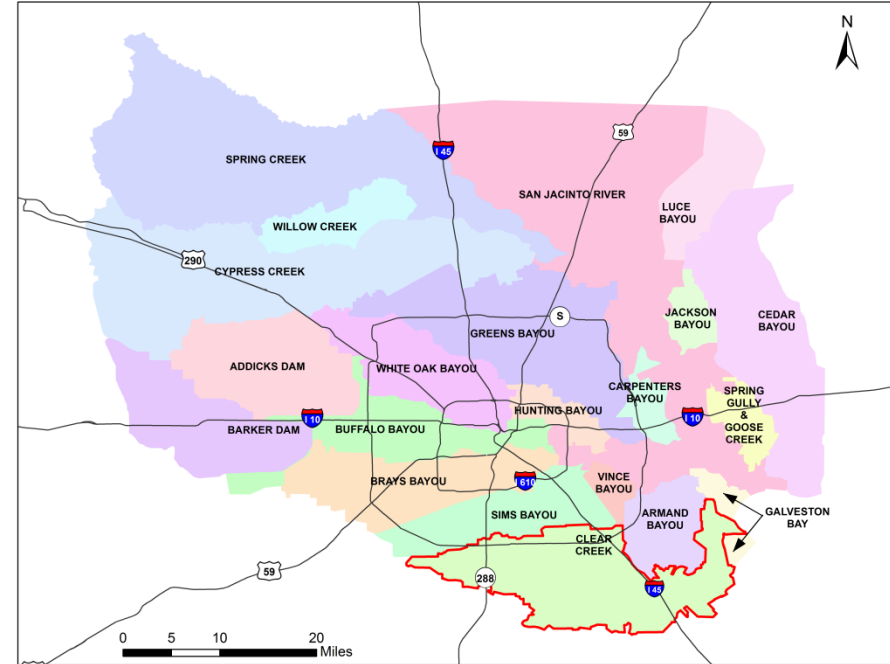
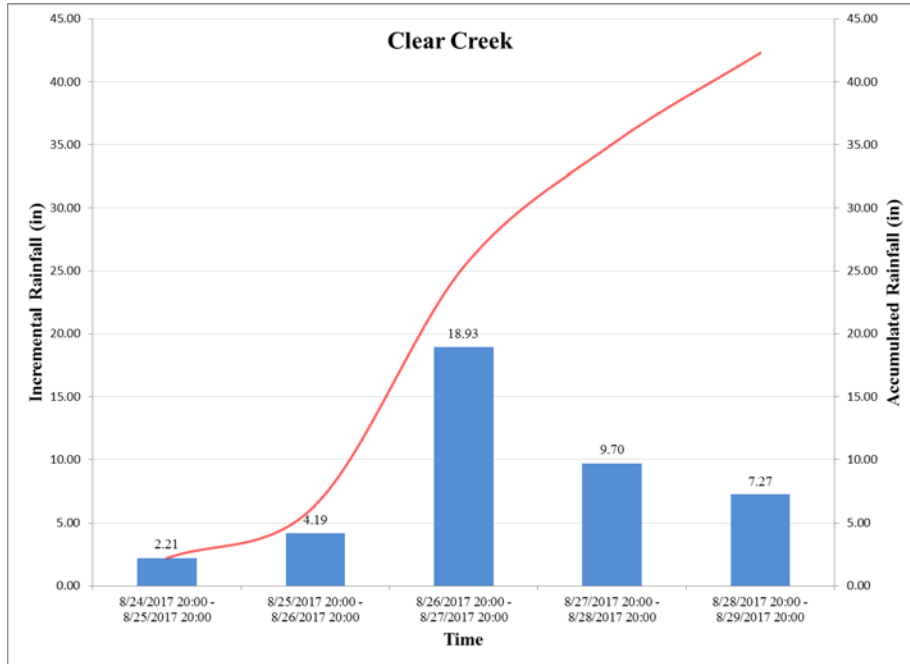


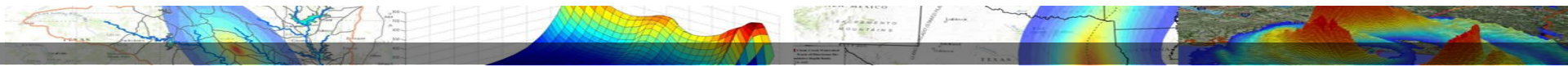


# Maximum 24 hr Rainfall for Brays Bayou



# Maximum 24 hr Rainfall for Clear Creek





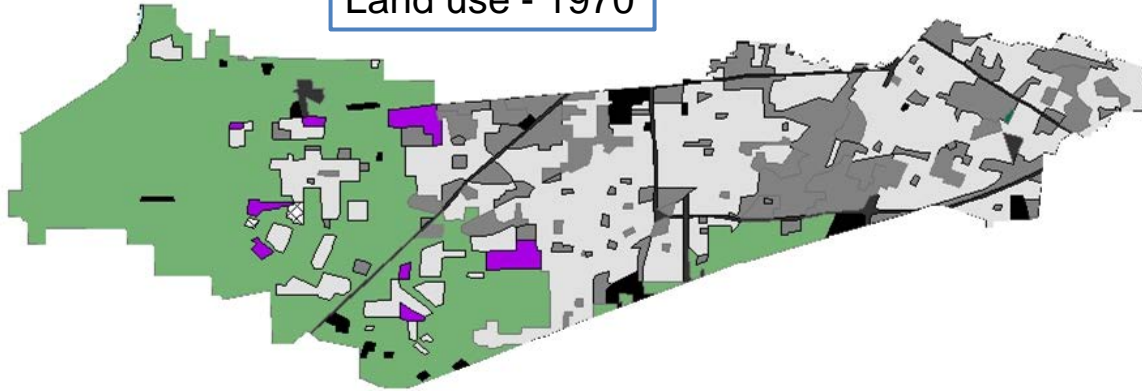
Nearly 500,000 people moved to Houston between 1990 and 2010. Many bayous prone to flooding



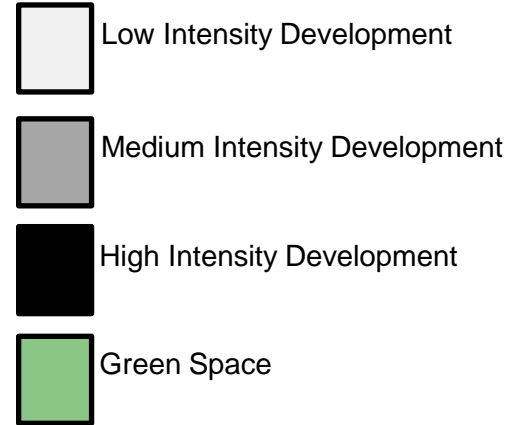
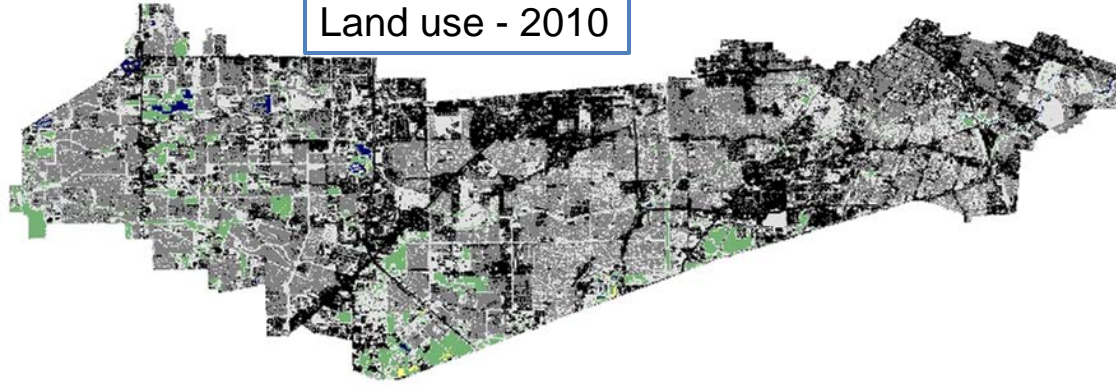


# Land Use Changes in Brays Watershed

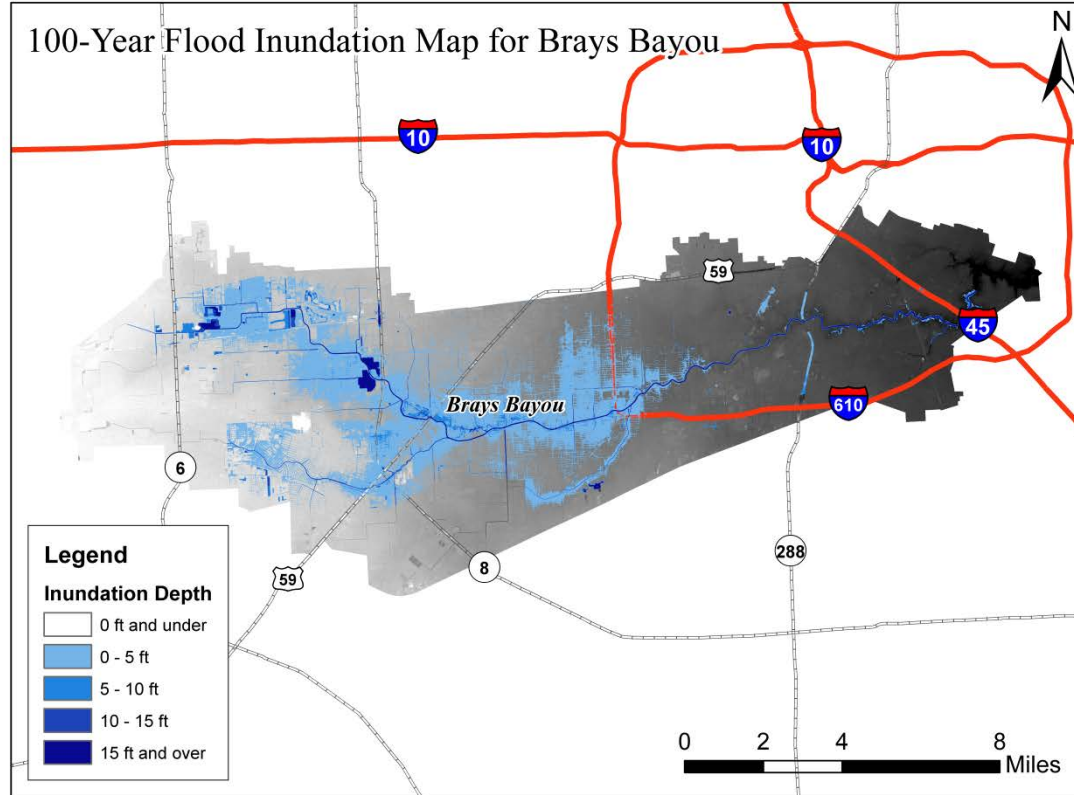
Land use - 1970



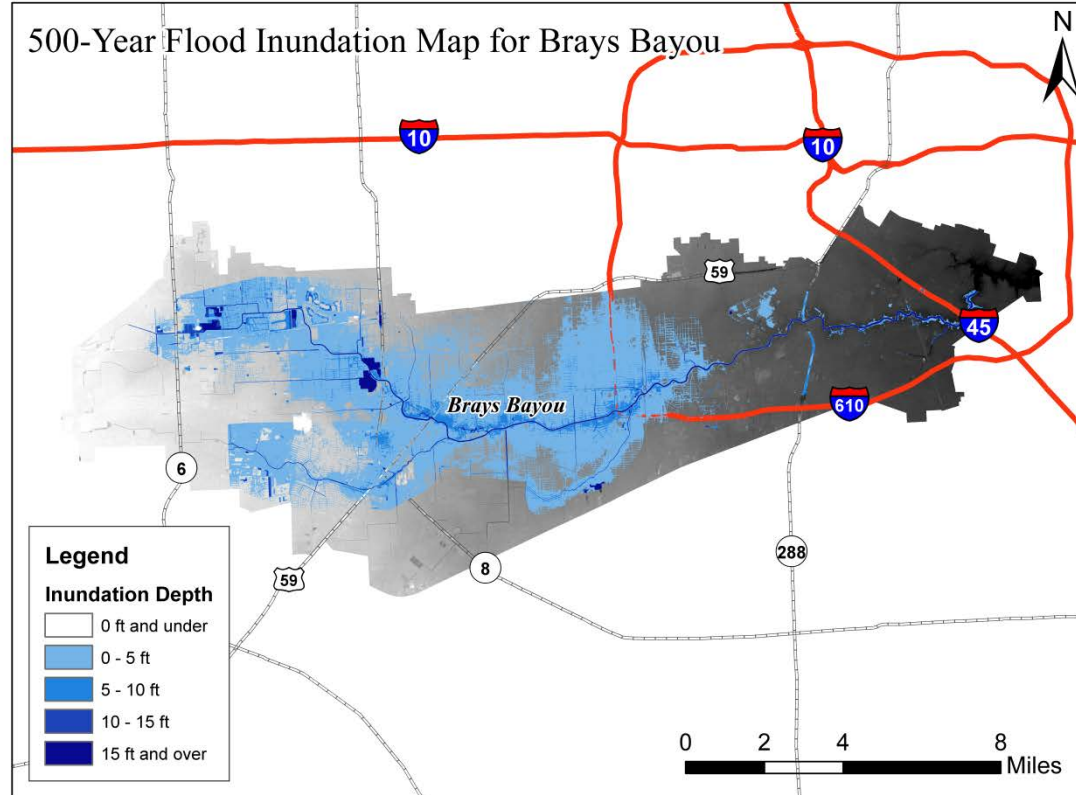
Land use - 2010



100-Yea

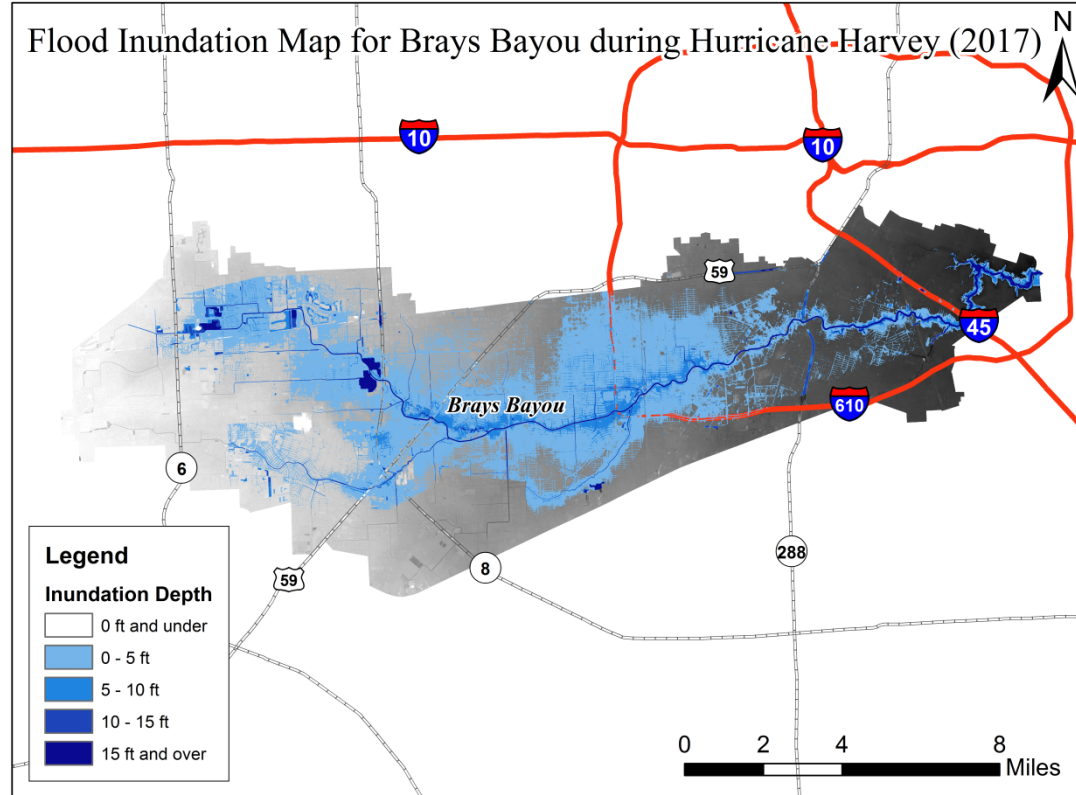


## 500-Year Flood Inundation Map for Brays Bayou

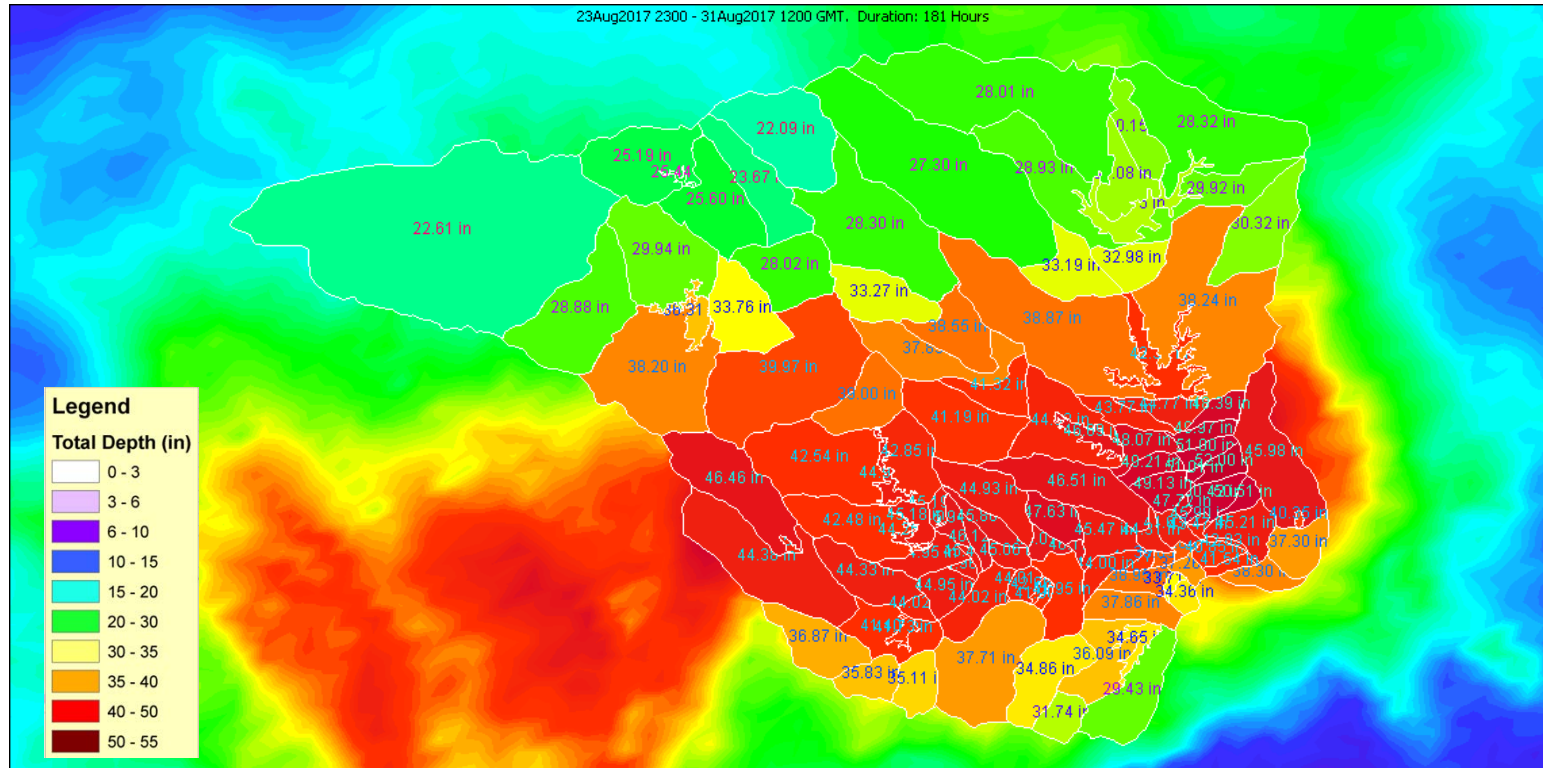




## Flood Inundation Map for Brays Bayou during Hurricane Harvey, 2017



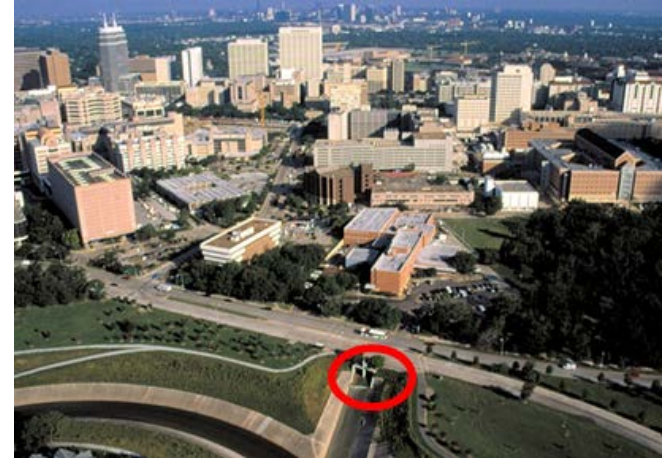
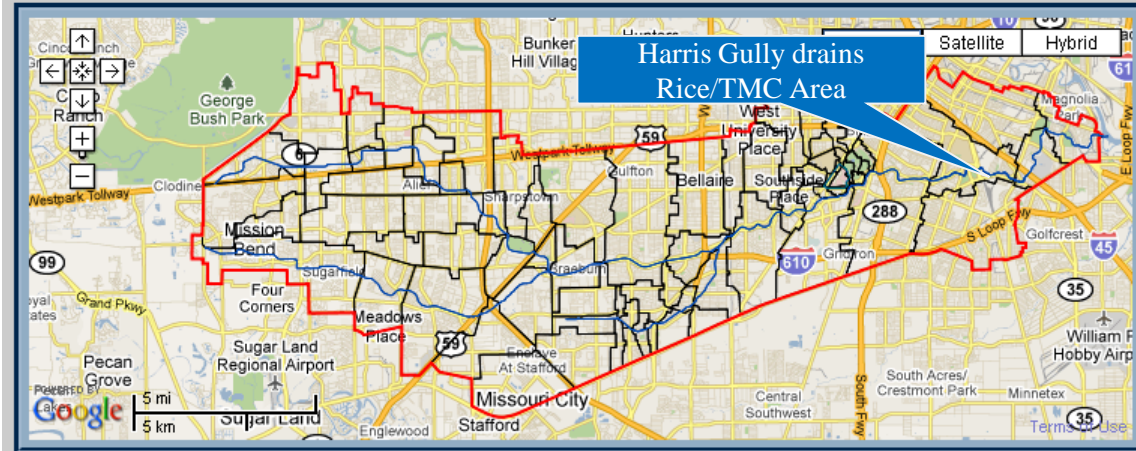
# Hurricane Harvey Transposed Over DFW



# Brays Bayou and Harris Gully

## THE RICE UNIVERSITY AND TEXAS MEDICAL CENTER FLOOD ALERT SYSTEM

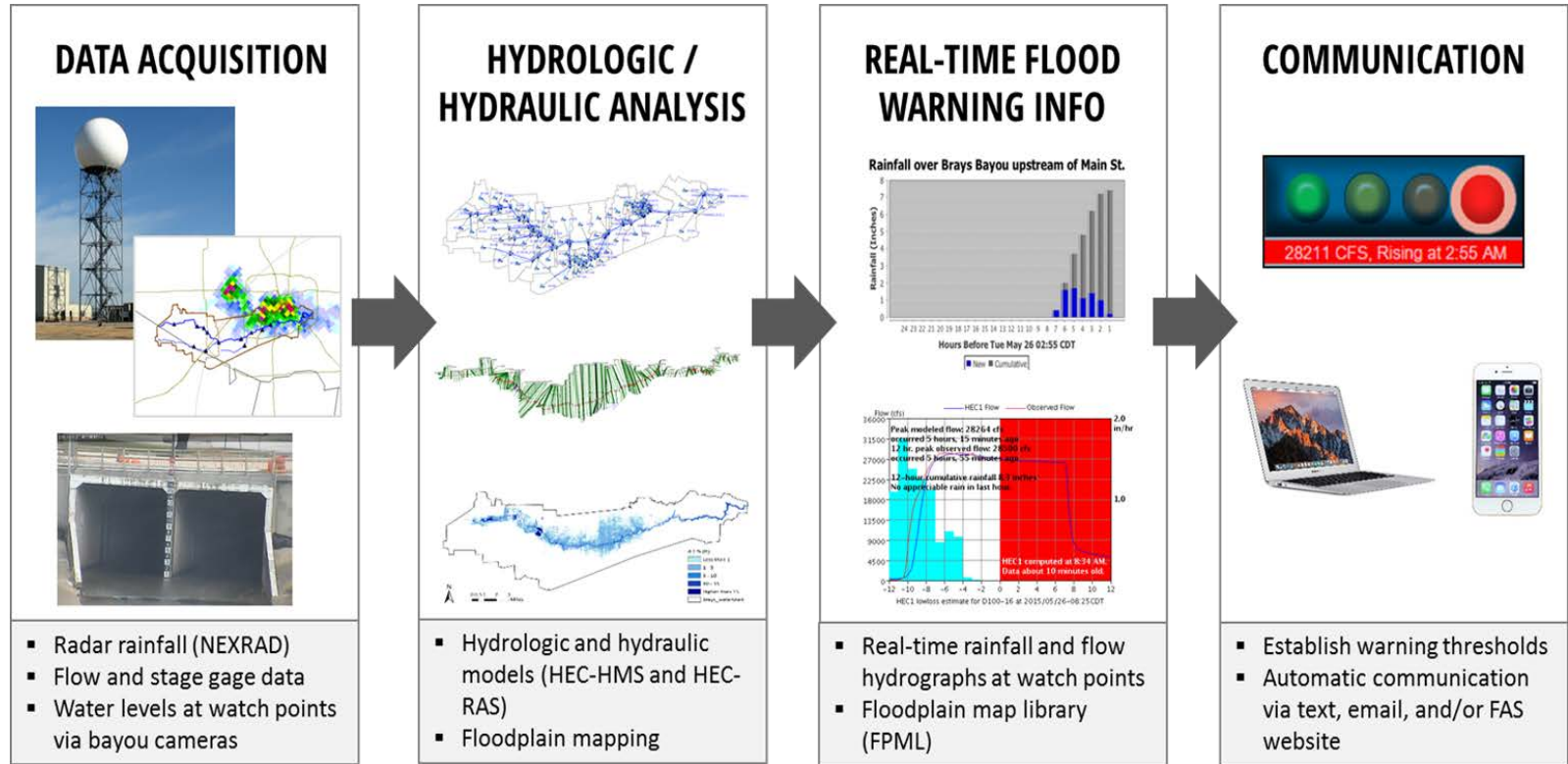
Home Radar Rainfall Cameras Hydrology Case Studies News



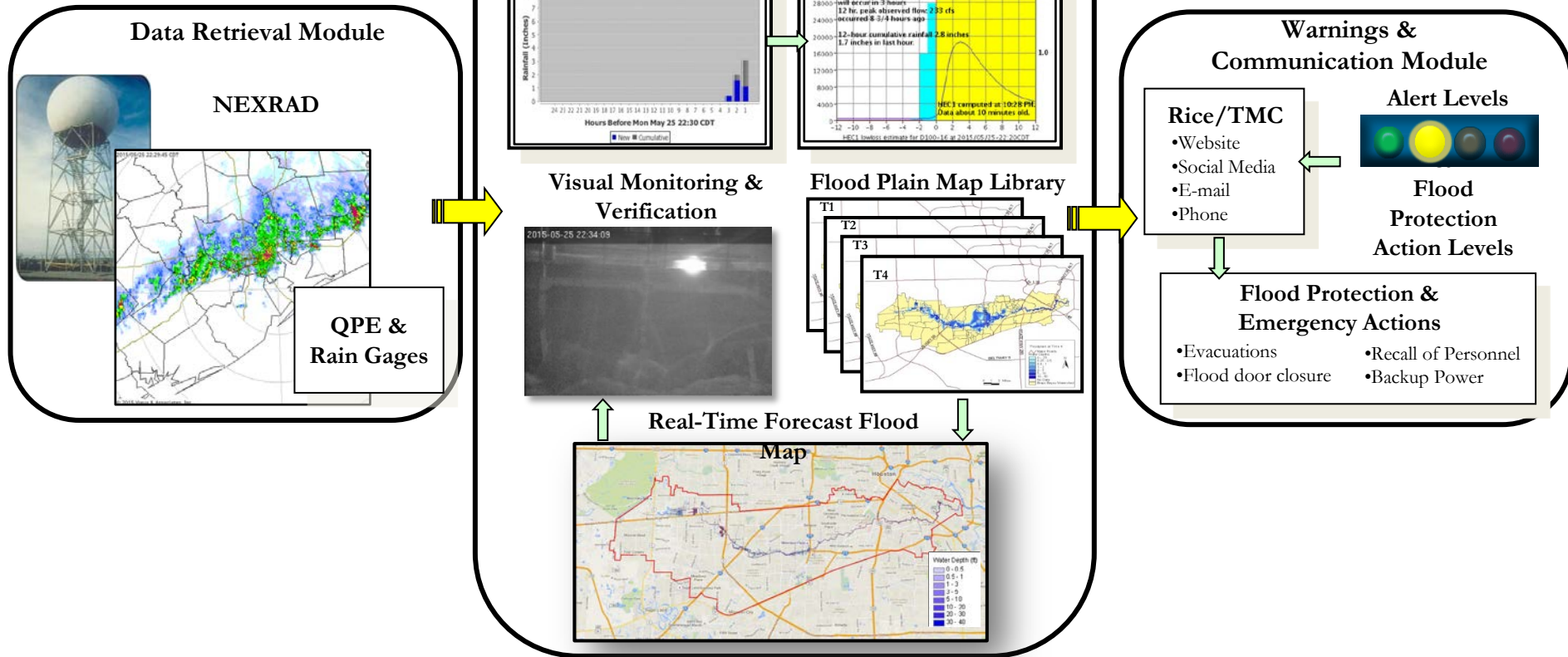
Harris Gully: 4.5 sq. mi.  
Brays Bayou: 129 sq. mi.

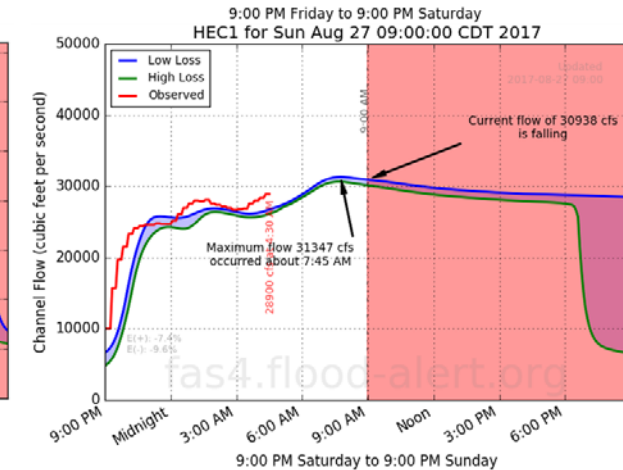
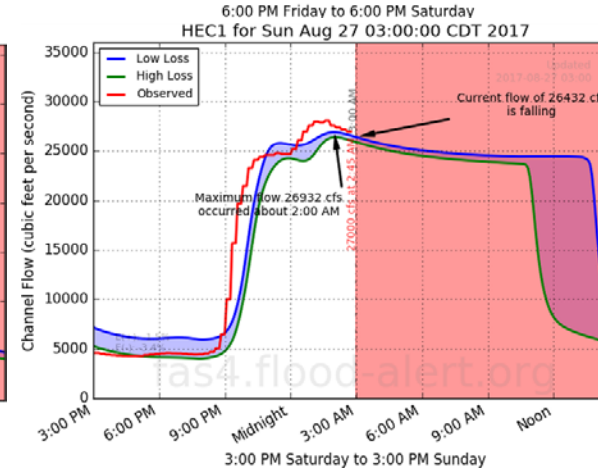
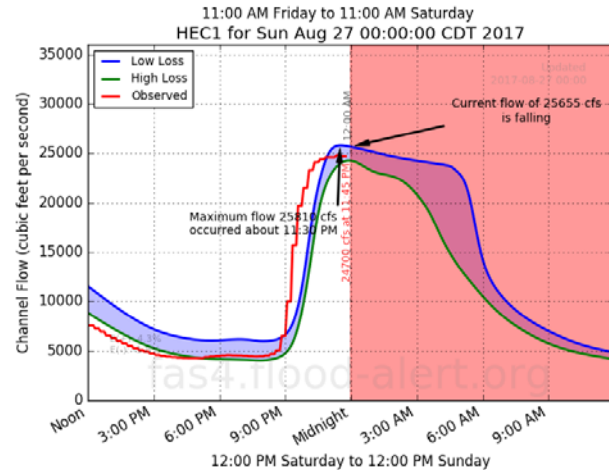
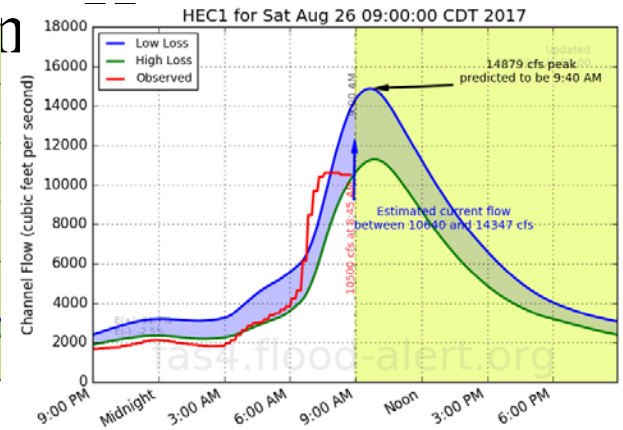
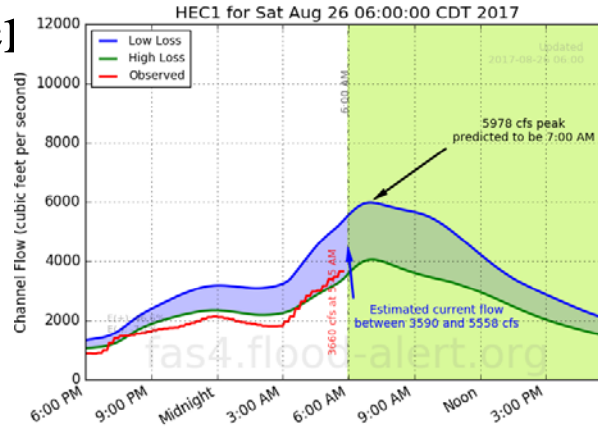
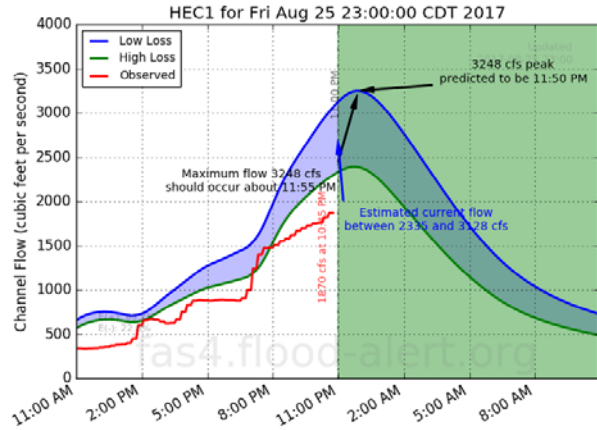


# Rice / TMC Flood Alert System Flowchart



# Rice/TMC Flood Alert System (FAS4)

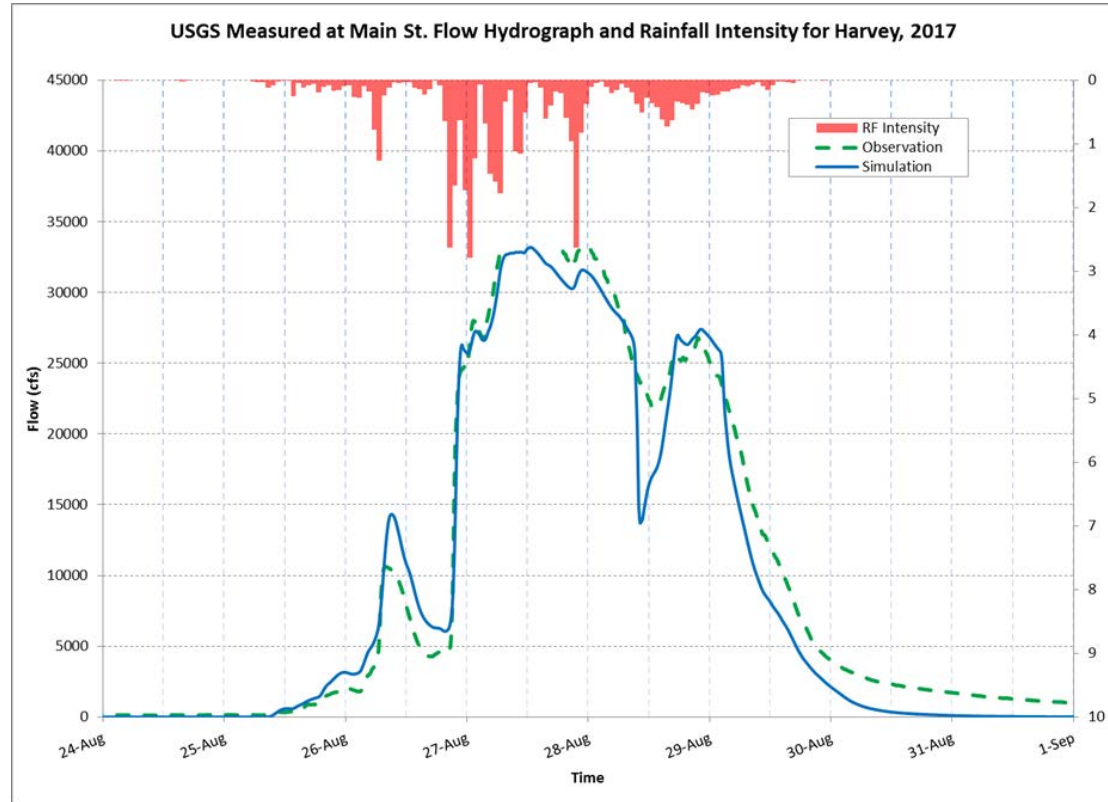


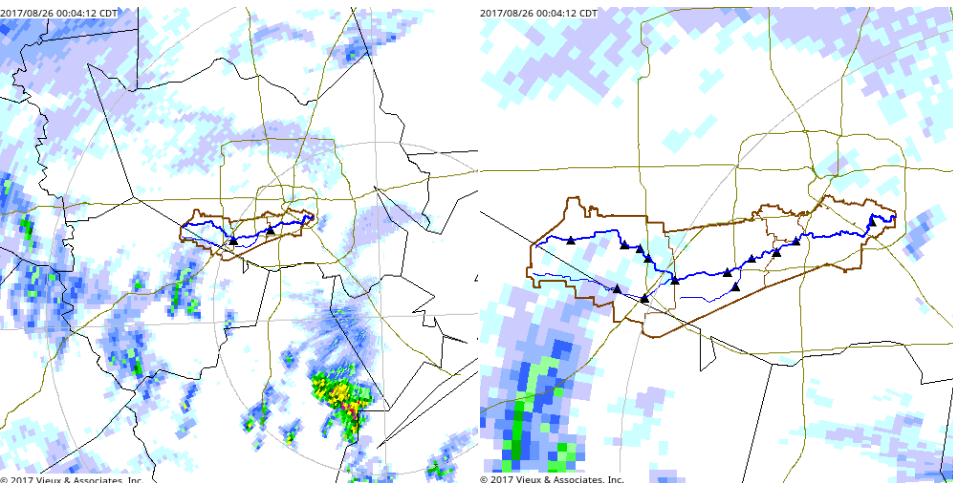




# USGS Measured at Main St. Flow Hydrograph and Rainfall Intensity for Harvey, 2017

Time	FAS3 Predicted Flow (cfs)	USGS Measured Flow (cfs)
8/26/2017 21:00	7370	6500
8/27/2017 0:00	25706	24700
8/27/2017 6:00	29968	31800
8/27/2017 12:00	33082	N/A
8/27/2017 18:00	31226	N/A
8/27/2017 19:00	30794	32900
8/28/2017 0:00:00	31372	33000
8/28/2017 6:00:00	28379	28900
8/28/2017 18:00:00	26830	25300
8/29/2017 0:00:00	26831	25100

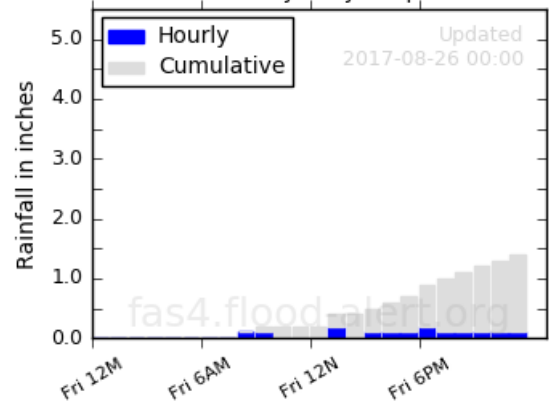




© 2017 Vieux &amp; Associates, Inc.

© 2017 Vieux &amp; Associates, Inc.

Test of Rainfall over Brays Bayou upstream of Main St.

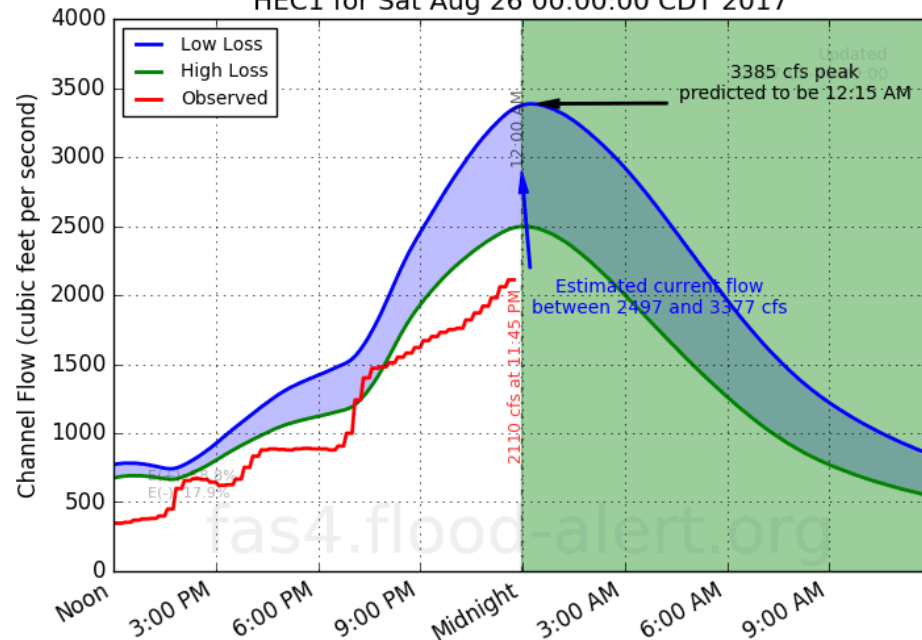


24-hour total: 1.4 in. Level of concern: Little

# THE RICE UNIVERSITY AND TEXAS MEDICAL CENTER FLOOD ALERT SYSTEM

## Aug 26 00:00

HEC1 for Sat Aug 26 00:00:00 CDT 2017



12:00 PM Friday to 12:00 PM Saturday

# Summary

- Rainfall from Hurricane Harvey is unprecedented (30-50'' over 5 days) close to PMP level
- Southern Harris County received more than 40'' of rainfall
- 70% of Harris County is under the water and the midstream of Brays Bayou experienced massive inundation
- Storms like Harvey will occur more often in the nation
- Our nation's infrastructure design criteria need to be updated
- New technologies available for addressing urban flood issues
- Smart cities need sustainability and resilience





# Acknowledgments

## Graduate Students

- *Shang Gao (Ph.D.)*
- *Daniel Li (Ph.D.)*
- *Cassie Zhang (Ph.D.)*
- *Hannah Jiang (Ph.D.)*
- *Kevin Wienhold (M.S.)*
- *Trevor Stull (Undergrad)*
- Tarrant Regional Water District (TRWD)
- The University of Texas Arlington (UTA)
- SSPEED Center
- The City of Kennedale
- National Science Foundation (NSF)
- U.S. Army Corps of Engineers (USACE)
- National Oceanic and Atmospheric Administration (NOAA)

